

# Anti-EpCAM/TROP-1/TACSTD1 antibody



Catalog Number: 106169

## Product name

Anti-EpCAM/TROP-1/TACSTD1 antibody

## Immunogen

[Mouse EpCAM/TROP-1/TACSTD1 \(His Tag\) recombinant protein](#)

## Specificity

Mouse EpCAM / TROP-1 / TACSTD1

**Has cross-reactivity** in ELISA with Rat EPCAM

**No cross-reactivity** in ELISA with Human EPCAM

## Antibody description

Rabbit monoclonal to EpCAM/TROP-1/TACSTD1

## Preparation

This antibody was obtained from a rabbit immunized with purified, recombinant Mouse EpCAM / TROP-1 / TACSTD1 (rM EpCAM / TROP-1 / TACSTD1; NP\_032558.2; Met1-Thr266).

## Formulation

0.2 µm filtered solution in PBS with 5% trehalose

## Storage

This antibody can be stored at 2°C-8°C for one month without detectable loss of activity. Antibody products are stable for twelve months from date of receipt when stored at -20°C to -80°C.

Preservative-Free.

Sodium azide is recommended to avoid contamination (final concentration 0.05%-0.1%). It is toxic to cells and should be disposed of properly. Avoid repeated freeze-thaw cycles.

## Clonality

Monoclonal

## Ig Type

Rabbit IgG

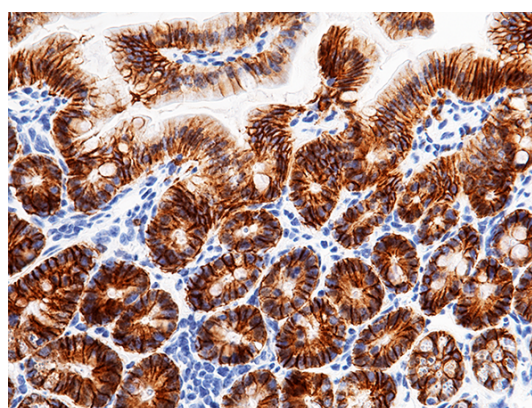
## Applications

IHC-P

## Dilutions

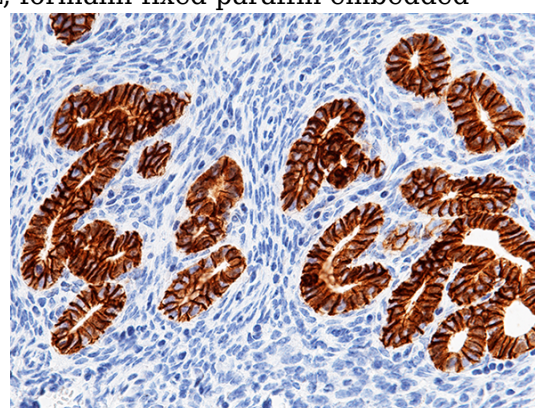
IHC-P: 1-5 µg/mL

## Validations



EpCAM / TROP-1 / TACSTD1 Antibody, Rabbit MAb, Immunohistochemistry

Immunochemical staining of mouse EpCAM in mouse intestine with rabbit monoclonal antibody (5 µg/mL, formalin-fixed paraffin embedded



sections).

EpCAM / TROP-1 / TACSTD1 Antibody, Rabbit MAb, Immunohistochemistry

Immunochemical staining of mouse EpCAM in mouse uterus with rabbit monoclonal antibody (5 µg/mL, formalin-fixed paraffin embedded sections).