

Anti-SLC2A4 antibody



Catalog Number: 106099

Product name

Anti-SLC2A4 antibody

WB: 2-10 µg/ml

IHC-P: 0.1-2 µg/mL

Specificity

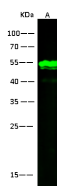
Human SLC2A4

ICC/IF: 0.5-1.5 µg/mL

Antibody description

Rabbit polyclonal to SLC2A4

Validations



Items	Lanes	A
Sample (tube/cell/cyste)		HepG2
Sample Volume (µg/lane)		30
Gel		13% SDS-PAGE reducing gel
Recommended Concentration		2-10 µg/ml
Secondary Antibody		Dylight 800 labeled Antibody to Rabbit IgG (H+L) at 1:5000 dilution.
Developed using Odyssey imaging system.		
Explanation		Predicted band size : 54 kDa Observed band size : 54 kDa Additional bands at : 55 kDa and 36 kDa (We are unsure as to the identity of these extra bands.)

Preparation

Produced in rabbits immunized with a synthetic peptide corresponding to the center region of the Human SLC2A4, and purified by antigen affinity chromatography.

SLC2A4 Antibody, Rabbit PAb, Antigen Affinity Purified, Western blot

Formulation

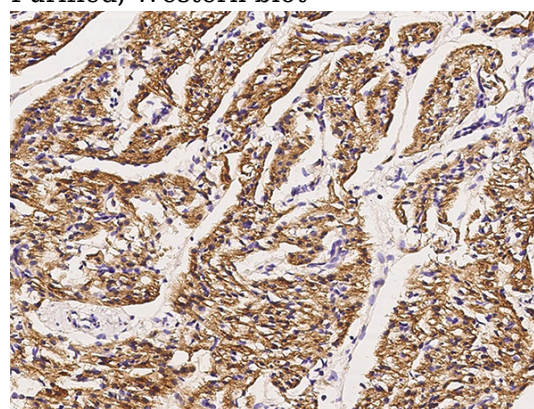
0.2 µm filtered solution in PBS

Storage

This antibody can be stored at 2°C-8°C for one month without detectable loss of activity. Antibody products are stable for twelve months from date of receipt when stored at -20°C to -80°C.

Preservative-Free.

Sodium azide is recommended to avoid contamination (final concentration 0.05%-0.1%). It is toxic to cells and should be disposed of properly. Avoid repeated freeze-thaw cycles.



SLC2A4 Antibody, Rabbit PAb, Antigen Affinity Purified, Immunohistochemistry

Clonality

Polyclonal

Immunochemical staining of human SLC2A4 in human heart with rabbit polyclonal antibody (0.5 µg/mL, formalin-fixed paraffin embedded

Ig Type

Rabbit IgG

Applications

WB, IHC-P, IF, ICC/IF

Dilutions

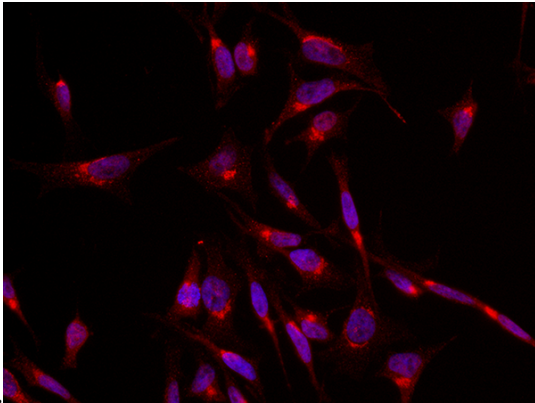
Anti-SLC2A4 antibody



Catalog Number: 106099

SLC2A4 Antibody, Rabbit PAb, Antigen Affinity Purified, Immunofluorescence

Immunofluorescence staining of SLC2A4 in HeLa cells. Cells were fixed with 4% PFA, permeabilized with 0.3% Triton X-100 in PBS, blocked with 10% serum, and incubated with rabbit anti-human SLC2A4 polyclonal antibody (1 $\mu\text{g}/\text{ml}$) at 4°C overnight. Then cells wer



sections).