

Anti-CLEC7A antibody



Catalog Number: 106086

Product name

Anti-CLEC7A antibody

Immunogen

[Mouse Dectin-1/CLEC7A \(His Tag\) recombinant protein](#)

Specificity

Mouse Dectin-1 / CLEC7A

Antibody description

Rabbit Monoclonal to Mouse CLEC7A

Preparation

This antibody was obtained from a rabbit immunized with purified, recombinant Mouse Dectin-1 / CLEC7A (rM Dectin-1 / CLEC7A; NP_064392.2; Phe69-Leu244) and conjugated with PE under optimum conditions, the unreacted PE was removed.

Formulation

Aqueous solution containing 0.5% BSA and 0.09% sodium azide

Storage

This antibody is stable for 12 months from date of receipt when stored at 2°C-8°C. Protected from prolonged exposure to light. Do not freeze ! Sodium azide is toxic to cells and should be

disposed of properly. Flush with large volumes of water during disposal.

Clonality

Monoclonal

Ig Type

Rabbit IgG

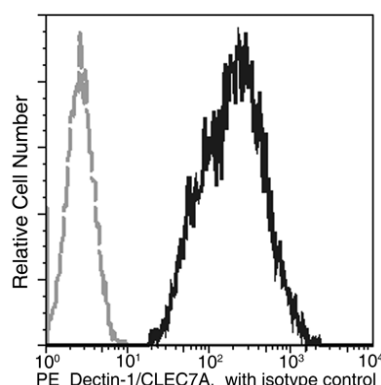
Applications

FCM

Dilutions

FCM

Validations



Dectin-1 / CLEC7A Antibody (PE), Rabbit MAb, Flow cytometric

Profile of anti-Dectin/CLEC7A reactivity on Raw264.7 cells analyzed by flow cytometry.