

# Anti-BCL2 / Bcl-2 antibody



Catalog Number: 106051

## Product name

Anti-BCL2 / Bcl-2 antibody

## Specificity

Human Bcl-2

## Antibody description

Rabbit polyclonal to BCL2 / Bcl-2

## Preparation

Produced in rabbits immunized with purified, a synthetic peptide corresponding to the N-terminus of the Human Bcl-2. Human Bcl-2 specific IgG was purified by Human Bcl-2 affinity chromatography.

## Formulation

0.2 µm filtered solution in PBS

## Storage

This antibody can be stored at 2°C-8°C for one month without detectable loss of activity. Antibody products are stable for twelve months from date of receipt when stored at -20°C to -80°C.

Preservative-Free.

Sodium azide is recommended to avoid contamination (final concentration 0.05%-0.1%). It is toxic to cells and should be disposed of properly. Avoid repeated freeze-thaw cycles.

## Clonality

Polyclonal

## Ig Type

Rabbit IgG

## Applications

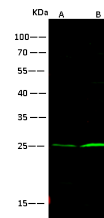
WB, IP

## Dilutions

WB: 5-10 µg/ml

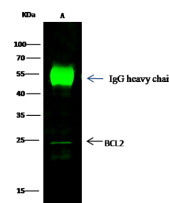
IP: 4-6 µg/mg of lysate

## Validations



Lanes	A	B
Items		
Sample (whole cell lysate)	HL-60	U937
Sample quantity (µg/lane)	30	30
Gel	13%SDS-PAGE reducing gel	
Recommended Concentration	5-10 µg/ml	
Secondary Antibody	Dylight 800-labeled Antibody To Rabbit IgG (H+L), at 1:5000 dilution	

## Bcl-2 Antibody, Rabbit PAb, Antigen Affinity Purified, Western blot



Lanes	A
Items	
Sample (whole cell lysate)	Jurkat
Sample quantity	0.5 mg
IP antibody quantity	2 µg
Protein G agarose	15 µl of 50% Protein G Agarose
Gel	13%SDS-PAGE reducing gel
Primary antibody	KLH-SimmA136 antibody at 5µg/ml
Secondary antibody	Dylight 800-labeled antibody to rabbit IgG (H+L), at 1:5000 dilution

## Bcl-2 Antibody, Rabbit PAb, Antigen Affinity Purified, Immunoprecipitation