

Anti-ENO1 / Enolase 1 / alpha-enolase antibody



Catalog Number: 105967

Product name

Anti-ENO1 / Enolase 1 / alpha-enolase antibody

Immunogen

[Rat ENO1 / Enolase 1 / alpha-enolase \(His Tag\) recombinant protein](#)

Specificity

Rat ENO1 / Enolase 1 / alpha-enolase

Antibody description

Rabbit polyclonal to ENO1 / Enolase 1 / alpha-enolase

Preparation

Produced in rabbits immunized with purified, recombinant Rat ENO1 / Enolase 1 / alpha-enolase (rh ENO1 / Enolase 1 / alpha-enolase; NP_036686.2; Met1-Lys434). ENO1 / Enolase 1 / alpha-enolase specific IgG was purified by Rat ENO1 / Enolase 1 / alpha-enolase affinity chromatography.

Formulation

0.2 µm filtered solution in PBS

Storage

This antibody can be stored at 2°C-8°C for one month without detectable loss of activity. Antibody products are stable for twelve months from date of receipt when stored at -20°C to -80°C. Preservative-Free.

Sodium azide is recommended to avoid contamination (final concentration 0.05%-0.1%). It is toxic to cells and should be disposed of properly. Avoid repeated freeze-thaw cycles.

Clonality

Polyclonal

Ig Type

Rabbit IgG

Applications

ELISA, WB, IP

Dilutions

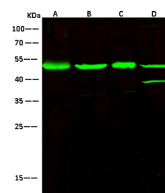
WB: 2-10 µg/ml

ELISA: 0.1-0.2 µg/mL

This antibody can be used at 0.1-0.2 µg/mL with the appropriate secondary reagents to detect Rat ENO1 / Enolase 1 / alpha-enolase. The detection limit for Rat ENO1 / Enolase 1 / alpha-enolase is < 0.039 ng/well.

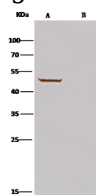
IP: 1-4 µg/mg of lysate

Validations



Lanes	A	B	C	D
Items				
Sample (whole cell lysate)	HepG2	Jurkat	MCF7	A431
Sample Volume (µg/lane)	30	30	30	30
Gel	13% SDS-PAGE reducing gel			
Recommended Concentration	2-10 µg/ml			
Secondary Antibody	Dylight 800-labeled Antibody to Rabbit IgG (H+L) at 1:5000 dilution. Developed using Odyssey imaging system.			
Explanation	Predicted band size : 47 kDa Observed band size : 47 kDa Additional bands at : 38 kDa (We are unsure as to the identity of these extra bands. They are possible non-specific bindings).			

ENO1 / Enolase 1 / alpha-enolase Antibody, Rabbit PAb, Antigen Affinity Purified, Western blot



Lanes	A	B
Items		
Sample (whole-cell lysate)	HepG2	
Sample quantity	0.5 mg	
IP antibody type	His-RatENO1-IP02	Rabbit blank IgG
IP antibody quantity	2 µg	
Protein G agarose	15 µl of 50% Protein G Agarose	
Gel	13% SDS-PAGE reducing gel	
Primary antibody	His-RatENO1 antibody at 10 µg/ml	
Secondary antibody	Clouster-IP Detection Reagent (HRP) at 1:1000 dilution	

ENO1 / Enolase 1 / alpha-enolase Antibody, Rabbit PAb, Antigen Affinity Purified,

Anti-ENO1 / Enolase 1 / alpha-enolase antibody



Catalog Number: 105967

Immunoprecipitation