

Anti-STUB1 antibody



Catalog Number: 105966

Product name

Anti-STUB1 antibody

Specificity

Human STUB1

Antibody description

Rabbit polyclonal to STUB1

Preparation

Produced in rabbits immunized with purified, recombinant Human STUB1 (rh STUB1; Q9NRX4-1; Ala2-Tyr125). STUB1 specific IgG was purified by Human STUB1 affinity chromatography.

Formulation

0.2 µm filtered solution in PBS

Storage

This antibody can be stored at 2°C-8°C for one month without detectable loss of activity. Antibody products are stable for twelve months from date of receipt when stored at -20°C to -80°C.

Preservative-Free.

Sodium azide is recommended to avoid contamination (final concentration 0.05%-0.1%). It is toxic to cells and should be disposed of properly. Avoid repeated freeze-thaw cycles.

Clonality

Polyclonal

Ig Type

Rabbit IgG

Applications

ELISA, WB, IP

Dilutions

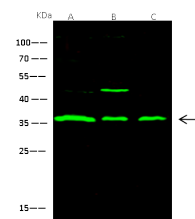
WB: 0.5-2 µg/ml

ELISA:0.1-0.2 µg/mL

This antibody can be used at 0.1-0.2 µg/mL with the appropriate secondary reagents to detect Human STUB1. The detection limit for Human STUB1 is 0.00245 ng/well.

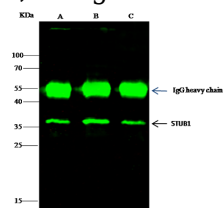
IP: 0.5-2 µg/mg of lysate

Validations



Lanes	A	B	C
Items			
Sample (whole cell lysate)	293T	MCF7	HELA
Sample Volume (µg/lane)	30	30	30
Gel	13% SDS-PAGE reducing gel		
Recommended Concentration	0.5-2 µg/ml		
Secondary Antibody	Dylight 800-labeled Antibody To Rabbit IgG (H+L), at 1:5000 dilution.		

STUB1 Antibody, Rabbit PAb, Antigen Affinity



Lanes	A	B	C
Items			
Sample (whole cell lysate)	HeLa	293T	MCF-7
Sample quantity	0.5 mg		
IP antibody quantity	2 µg		
Protein G agarose	15 µl of 50% Protein G Agarose		
Gel	13% SDS-PAGE reducing gel		
Primary antibody	GST-STUB1 antibody at 1 µg/ml		
Secondary antibody	Dylight 800-labeled antibody to rabbit IgG (H+L), at 1:5000 dilution.		

Purified, Western blot

STUB1 Antibody, Rabbit PAb, Antigen Affinity Purified, Immunoprecipitation