

# Anti-LILRB3 antibody



Catalog Number: 105940

## Product name

Anti-LILRB3 antibody

## Immunogen

[Human LILRB3 \(His Tag\) recombinant protein](#)

## Specificity

Human LILRB3

## Antibody description

Mouse monoclonal to LILRB3

## Preparation

This antibody was produced from a hybridoma resulting from the fusion of a mouse myeloma with B cells obtained from a mouse immunized with purified, recombinant Human LILRB3 (rh LILRB3; NP\_006855.2; Met1-Glu443). The IgG fraction of the cell culture supernatant was purified by Protein A affinity chromatography.

## Formulation

0.2  $\mu$ m filtered solution in PBS

## Storage

This antibody can be stored at 2°C-8°C for one month without detectable loss of activity. Antibody products are stable for twelve months from date of receipt when stored at -20°C to -80°C.

Preservative-Free.

Sodium azide is recommended to avoid contamination (final concentration 0.05%-0.1%). It is toxic to cells and should be disposed of

properly. Avoid repeated freeze-thaw cycles.

## Clonality

Monoclonal

## Ig Type

Mouse IgG1

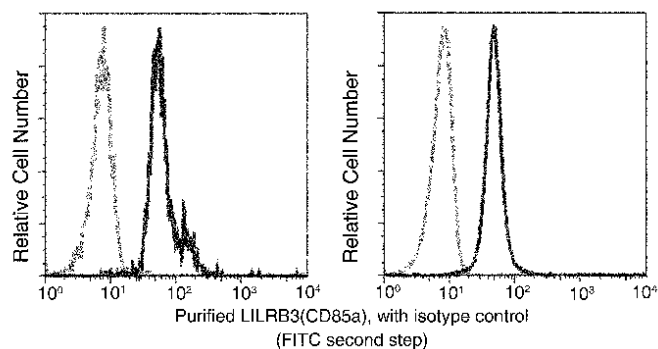
## Applications

FCM

## Dilutions

FCM: 0.5-2  $\mu$ g/Test

## Validations



## LILRB3 Antibody, Mouse MAb, Flow Cytometry

Flow cytometric analysis of Human LILRB3(CD85a) expression on human whole blood monocytes (left panel) and granulocytes (right panel). Cells were stained purified anti-Human LILRB3(CD85a) then a FITC-conjugated second step antibody. The histograms were derived from gated events with the forward and side light-scatter characteristics of viable monocytes and granulocytes.