

# Anti-MSI1 antibody



Catalog Number: 105934

## Product name

Anti-MSI1 antibody

IHC-P: 0.5-5 µg/mL

ICC/IF: 0.5-1.5 µg/mL

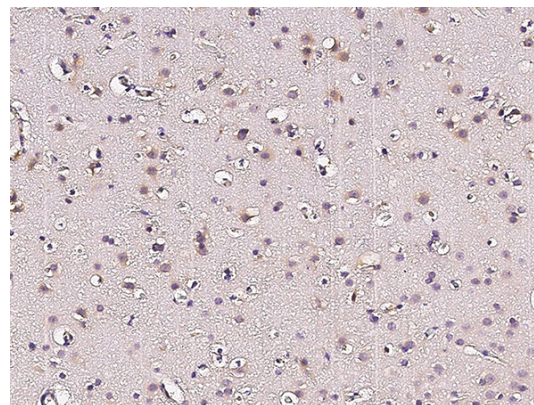
## Specificity

Human Musashi-1

## Validations

## Antibody description

Rabbit polyclonal to MSI1



## Preparation

Produced in rabbits immunized with a synthetic peptide corresponding to the center region of the Human Musashi-1, and purified by antigen affinity chromatography.

Musashi-1 Antibody, Rabbit PAb, Antigen Affinity Purified, Immunohistochemistry

## Formulation

0.2 µm filtered solution in PBS

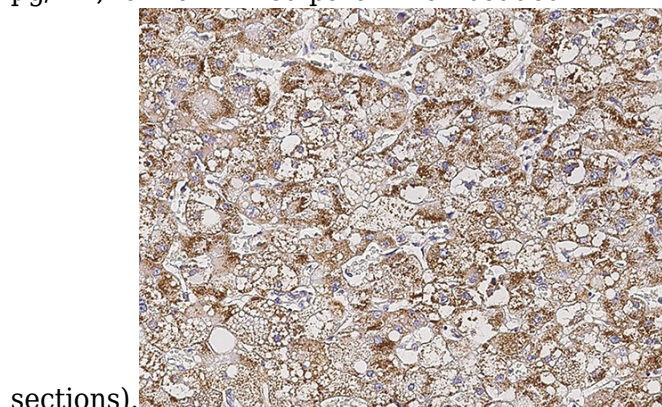
Immunochemical staining of human MSI1 in human brain with rabbit polyclonal antibody (2 µg/mL, formalin-fixed paraffin embedded

## Storage

This antibody can be stored at 2°C-8°C for one month without detectable loss of activity. Antibody products are stable for twelve months from date of receipt when stored at -20°C to -80°C.

Preservative-Free.

Sodium azide is recommended to avoid contamination (final concentration 0.05%-0.1%). It is toxic to cells and should be disposed of properly. Avoid repeated freeze-thaw cycles.



sections).

Musashi-1 Antibody, Rabbit PAb, Antigen Affinity Purified, Immunohistochemistry

## Clonality

Polyclonal

## Ig Type

Rabbit IgG

Immunochemical staining of human MSI1 in human hepatoma with rabbit polyclonal antibody (2 µg/mL, formalin-fixed paraffin embedded

## Applications

IHC-P, IF, ICC/IF

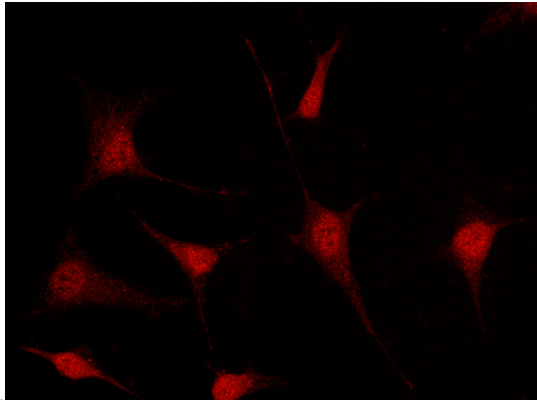
## Dilutions

# Anti-MSI1 antibody



Catalog Number: 105934

---



Musashi-1 Antibody, Rabbit PAb, Antigen Affinity Purified, Immunofluorescence

Immunofluorescence staining of MSI1 in HeLa cells. Cells were fixed with 4% PFA, permeabilized with 0.3% Triton X-100 in PBS, blocked with 10% serum, and incubated with rabbit anti-human MSI1 polyclonal antibody (1  $\mu\text{g}/\text{ml}$ ) at 4°C overnight. Then cells were st

sections).