

Anti-SOCS1 antibody



Catalog Number: 105897

Product name

Anti-SOCS1 antibody

Specificity

Human SOCS1

Antibody description

Rabbit polyclonal to SOCS1

Preparation

Produced in rabbits immunized with a synthetic peptide corresponding to the center region of the Human SOCS1, and purified by antigen affinity chromatography.

Formulation

0.2 μm filtered solution in PBS

Storage

This antibody can be stored at 2°C-8°C for one month without detectable loss of activity. Antibody products are stable for twelve months from date of receipt when stored at -20°C to -80°C.

Preservative-Free.

Sodium azide is recommended to avoid contamination (final concentration 0.05%-0.1%). It is toxic to cells and should be disposed of properly. Avoid repeated freeze-thaw cycles.

Clonality

Polyclonal

Ig Type

Rabbit IgG

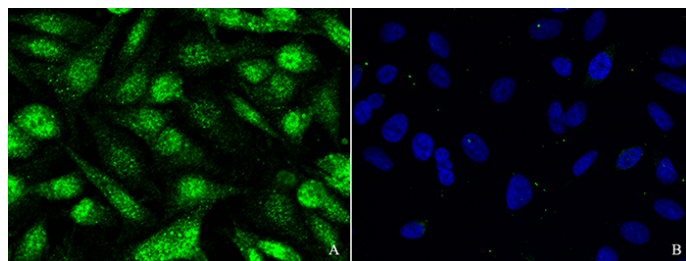
Applications

IF, ICC/IF

Dilutions

ICC/IF: 0.5-1.5 $\mu\text{g}/\text{mL}$

Validations



SOCS1 Antibody, Rabbit PAb, Antigen Affinity Purified, Immunofluorescence

Immunofluorescence staining of SOCS1 in HeLa cells. Cells were fixed with 4% PFA, blocked with 10% serum. Then incubated with rabbit anti-human SOCS1 polyclonal antibody (1 $\mu\text{g}/\text{ml}$) (Figure A), incubated with rabbit anti-human SOCS1 polyclonal antibody and antigen (Figure B) at 4°C overnight. Then cells were stained with the Alexa Fluor®488-conjugated Goat Anti-rabbit IgG secondary antibody (green) and counterstained with DAPI (blue). Positive staining was localized to cytoplasm and nucleus.