

Product name

Anti-Insulin / INS antibody

Specificity

Human Insulin / INS

Antibody description

Rabbit polyclonal to Insulin / INS

Preparation

Produced in rabbits immunized with a synthetic peptide corresponding to the center region of the Human Insulin / INS, and purified by antigen affinity chromatography.

Formulation

0.2 μm filtered solution in PBS

Storage

This antibody can be stored at 2°C-8°C for one month without detectable loss of activity. Antibody products are stable for twelve months from date of receipt when stored at -20°C to -80°C.

Preservative-Free.

Sodium azide is recommended to avoid contamination (final concentration 0.05%-0.1%). It is toxic to cells and should be disposed of properly. Avoid repeated freeze-thaw cycles.

Clonality

Polyclonal

Ig Type

Rabbit IgG

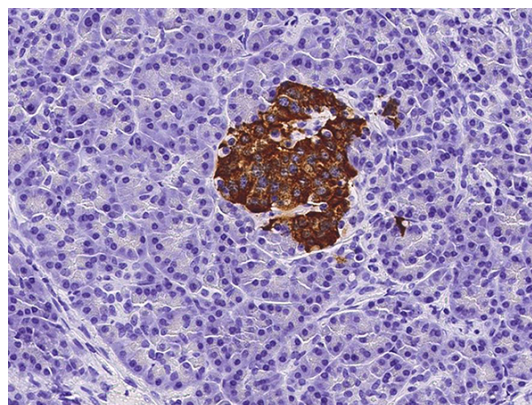
Applications

IHC-P

Dilutions

IHC-P: 0.05-1 $\mu\text{g}/\text{mL}$

Validations



Insulin / INS Antibody, Rabbit PAb, Antigen Affinity Purified, Immunohistochemistry

Immunochemical staining of human INS in human pancreas with rabbit polyclonal antibody (0.05 $\mu\text{g}/\text{mL}$, formalin-fixed paraffin embedded sections).