

Anti-SLAMF8 antibody



Catalog Number: 105843

Product name

Anti-SLAMF8 antibody

Immunogen

[Mouse SLAMF8 \(His Tag\) recombinant protein](#)

Specificity

Mouse SLAMF8

Antibody description

Rabbit polyclonal to SLAMF8

Preparation

Produced in rabbits immunized with purified, recombinant Mouse SLAMF8 (rh SLAMF8; NP_083360.2; Met 1-Asp 231). SLAMF8 specific IgG was purified by Mouse SLAMF8 affinity chromatography.

Formulation

0.2 μ m filtered solution in PBS

Storage

This antibody can be stored at 2°C-8°C for one month without detectable loss of activity. Antibody products are stable for twelve months from date of receipt when stored at -20°C to -80°C.

Preservative-Free.

Sodium azide is recommended to avoid contamination (final concentration 0.05%-0.1%). It is toxic to cells and should be disposed of properly. Avoid repeated freeze-thaw cycles.

Clonality

Polyclonal

Ig Type

Rabbit IgG

Applications

ELISA, WB

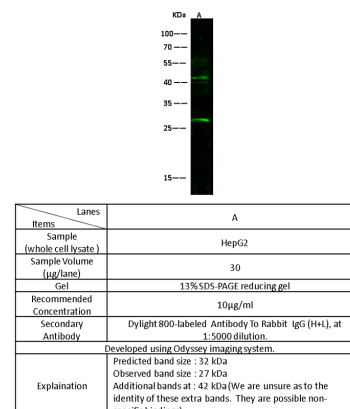
Dilutions

WB: 5-10 μ g/ml

ELISA: 0.1-0.2 μ g/mL

This antibody can be used at 0.1-0.2 μ g/mL with the appropriate secondary reagents to detect Mouse SLAMF8. The detection limit for Mouse SLAMF8 is < 0.039 ng/well.

Validations



SLAMF8 Antibody, Rabbit PAb, Antigen Affinity Purified, Western blot