

Anti-Estrogen Receptor alpha antibody



Catalog Number: 105821

Product name

Anti-Estrogen Receptor alpha antibody

Specificity

Human ESR1

Antibody description

Rabbit polyclonal to Estrogen Receptor alpha

Preparation

Produced in rabbits immunized with A synthetic peptide corresponding to the N-terminus of the human Estrogen Receptor alpha., and purified by antigen affinity chromatography.

Formulation

0.2 µm filtered solution in PBS

Storage

This antibody can be stored at 2°C-8°C for one month without detectable loss of activity. Antibody products are stable for twelve months from date of receipt when stored at -20°C to -80°C.

Preservative-Free.

Sodium azide is recommended to avoid contamination (final concentration 0.05%-0.1%). It is toxic to cells and should be disposed of properly. Avoid repeated freeze-thaw cycles.

Clonality

Polyclonal

Ig Type

Rabbit IgG

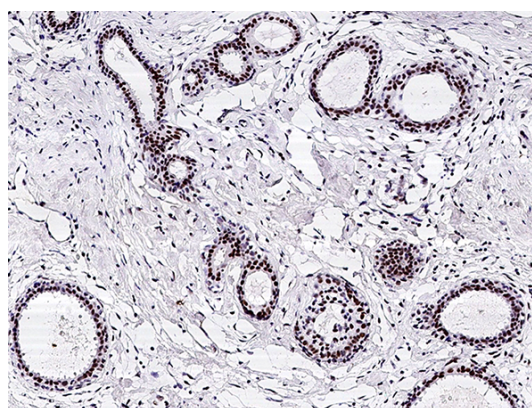
Applications

IHC-P

Dilutions

IHC-P: 0.05-1 µg/mL

Validations



Estrogen Receptor alpha Antibody, Rabbit PAb, Antigen Affinity Purified, Immunohistochemistry

Immunochemical staining of human ER in human breast with rabbit polyclonal antibody (0.05 µg/mL, formalin-fixed paraffin embedded sections).