

Anti-TGF-beta 1/TGFB1 antibody



Catalog Number: 105818

Product name

Anti-TGF-beta 1/TGFB1 antibody

Immunogen

[Canine TGF-beta 1/TGFB1 \(His Tag\) recombinant protein](#)

Specificity

Canine TGF-beta 1 / TGFB1

Antibody description

Rabbit polyclonal to TGF-beta 1/TGFB1

Preparation

Produced in rabbits immunized with purified, recombinant Canine TGF-beta 1 / TGFB1 (rh TGF-beta 1 / TGFB1; ; Met1-Ser390). TGF-beta 1 / TGFB1 specific IgG was purified by Canine TGF-beta 1 / TGFB1 affinity chromatography.

Formulation

0.2 µm filtered solution in PBS

Storage

This antibody can be stored at 2°C-8°C for one month without detectable loss of activity. Antibody products are stable for twelve months from date of receipt when stored at -20°C to -80°C.

Preservative-Free.

Sodium azide is recommended to avoid contamination (final concentration 0.05%-0.1%). It is toxic to cells and should be disposed of properly. Avoid repeated freeze-thaw cycles.

Clonality

Polyclonal

Ig Type

Rabbit IgG

Applications

ELISA, WB, IP

Dilutions

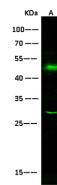
WB: 10-20 µg/ml

ELISA: 0.1-0.2 µg/mL

This antibody can be used at 0.1-0.2 µg/mL with the appropriate secondary reagents to detect Canine TGF-beta 1 / TGFB1. The detection limit for Canine TGF-beta 1 / TGFB1 is < 0.039 ng/well.

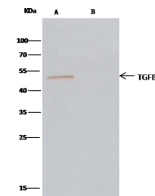
IP: 1-4 µg/mg of lysate

Validations



Items	Lanes	A
Sample (whole cell lysate)		k562
Sample Volume (µg/lane)		30
Gel		13%SDS-PAGE reducing gel
Recommended Concentration		10-20 µg/ml
Secondary Antibody		Dylight 800-labeled Antibody to Rabbit IgG (H+L), at 1:5000 dilution
Explanation	Developed using Odyssey imaging system. Predicted band size : 44 kDa Observed band size : 48 kDa Additional bands at : 28 kDa (We are unsure as to the identity of these extra bands. They are possible non-specific bindings).	

TGF-beta 1 / TGFB1 Antibody, Rabbit PAb, Antigen Affinity Purified, Western blot



Items	Lanes	A	B
Sample (whole cell lysate)		K562	
Sample quantity		0.5 mg	
IP antibody type		CanineTGFB1-His-SP02	Rabbit blank IgG
IP antibody quantity		2 µg	
Protein G agarose		1.5 µl of 50% Protein G Agarose	
Gel		13% SDS-PAGE reducing gel	
Primary antibody		CanineTGFB1-His antibody at 10 µg/ml	
Secondary antibody		Clou-Block IP Detection Reagent (CBIP) at 1:1000 dilution	

TGF-beta 1 / TGFB1 Antibody, Rabbit PAb, Antigen Affinity Purified, Immunoprecipitation