

# Anti-CEBPB antibody



Catalog Number: 105801

## Product name

Anti-CEBPB antibody

## Specificity

Human CEBPB

## Antibody description

Rabbit polyclonal to CEBPB

## Preparation

Produced in rabbits immunized with A synthetic peptide corresponding to the C-terminus of the human CEBPB, and purified by antigen affinity chromatography.

## Formulation

0.2 µm filtered solution in PBS

## Storage

This antibody can be stored at 2°C-8°C for one month without detectable loss of activity. Antibody products are stable for twelve months from date of receipt when stored at -20°C to -80°C.

Preservative-Free.

Sodium azide is recommended to avoid contamination (final concentration 0.05%-0.1%). It is toxic to cells and should be disposed of

properly. Avoid repeated freeze-thaw cycles.

## Clonality

Polyclonal

## Ig Type

Rabbit IgG

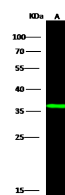
## Applications

WB

## Dilutions

WB: 5-10 µg/mL

## Validations



| Lanes                                   | A   |
|---|---|
| Items                                   |   |
| Sample (whole cell lysate)              | PC12  |
| Sample Volume (µg/Lane)                 | 30  |
| Gel                                     | 13% SDS-PAGE, reducing gel  |
| Recommended Concentration               | 5-10µg/ml   |
| Secondary Antibody                      | Dylight 800 labeled Antibody to Rabbit IgG (1:1), at 1:5000 dilution. |
| Developed using Odyssey imaging system. |   |
| Explanation                             | Predicted band size : 36 kDa<br>Observed band size : 36 kDa           |

CEBPB Antibody, Rabbit PAb, Antigen Affinity Purified, Western blot