

Anti-HER2/ErbB2 antibody



Catalog Number: 105724

Product name

Anti-HER2/ErbB2 antibody

Specificity

Human ERBB2

Antibody description

Rabbit polyclonal to HER2/ErbB2

Preparation

Produced in rabbits immunized with A synthetic peptide corresponding to the center region of the human ERBB2 , and purified by antigen affinity chromatography.

Formulation

0.2 µm filtered solution in PBS

Storage

This antibody can be stored at 2°C-8°C for one month without detectable loss of activity. Antibody products are stable for twelve months from date of receipt when stored at -20°C to -80°C.

Preservative-Free.

Sodium azide is recommended to avoid contamination (final concentration 0.05%-0.1%). It is toxic to cells and should be disposed of

properly. Avoid repeated freeze-thaw cycles.

Clonality

Polyclonal

Ig Type

Rabbit IgG

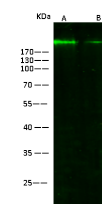
Applications

WB

Dilutions

WB: 10-15 µg/mL

Validations



Lanes	A	B
Items		
Sample [whole cell lysate]	SKBR3	HEK293
Sample volume (µg/lane)	30	30
Gel	13% SDS-PAGE reducing gel	
Recommended concentration	10-15µg/ml	
Secondary Antibody	Dylight 800-labeled Antibody To Rabbit IgG (H+L), at 1:5000 dilution.	
Developed using Odyssey imaging system.		
Explanation	Predicted band size : 138 kDa Observed band size : 200 kDa	

ERBB2 Antibody, Rabbit PAb, Antigen Affinity Purified, Western blot