

# Anti-LRRC3B/LRP15 antibody



Catalog Number: 105719

## Product name

Anti-LRRC3B/LRP15 antibody

## Immunogen

[Human LRRC3B/LRP15 \(His Tag\) recombinant protein](#)

## Specificity

Human LRRC3B

## Antibody description

Rabbit polyclonal to LRRC3B/LRP15

## Preparation

Produced in rabbits immunized with purified, recombinant Human LRRC3B (rh LRRC3B; NP\_443185.1; Met1-Tyr204). LRRC3B specific IgG was purified by Human LRRC3B affinity chromatography.

## Formulation

0.2 µm filtered solution in PBS

## Storage

This antibody can be stored at 2°C-8°C for one month without detectable loss of activity. Antibody products are stable for twelve months from date of receipt when stored at -20°C to -80°C. Preservative-Free.

Sodium azide is recommended to avoid contamination (final concentration 0.05%-0.1%). It is toxic to cells and should be disposed of properly. Avoid repeated freeze-thaw cycles.

## Clonality

Polyclonal

## Ig Type

Rabbit IgG

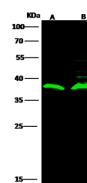
## Applications

WB

## Dilutions

WB: 5-10 µg/ml

## Validations



Lanes	A	B
Sample (whole cell lysate)	A549	HEK293
Sample Volume (µg/lane)	30	30
Gel	13% SDS-PAGE reducing gel	
Recommended Concentration	5-10 µg/ml	
Secondary Antibody	Dylight 800 labeled Antibody to Rabbit IgG (H+), at 1:5000 dilution.	
Developed using Odyssey imaging system.		
Explanation	Predicted band size : 29 kDa Observed band size : 38 kDa Additional bands at : 40 kDa (We are unsure as to the identity of these extra bands.)	

LRRC3B Antibody, Rabbit PAb, Antigen Affinity Purified, Western blot