

# Anti-TGF-beta 1/TGFB1 antibody



Catalog Number: 105711

## Product name

Anti-TGF-beta 1/TGFB1 antibody

## Immunogen

[Human TGF-beta 1/TGFB1 \(His Tag\) recombinant protein](#)

## Specificity

Human TGF-beta 1 / TGFB1

## Antibody description

Rabbit polyclonal to TGF-beta 1/TGFB1

## Preparation

Produced in rabbits immunized with purified, recombinant Human TGF-beta 1 / TGFB1 (rh TGF-beta 1 / TGFB1; NP\_000651.3; Met1-Ser390). TGF-beta 1 / TGFB1 specific IgG was purified by Human TGF-beta 1 / TGFB1 affinity chromatography.

## Formulation

0.2 µm filtered solution in PBS

## Storage

This antibody can be stored at 2°C-8°C for one month without detectable loss of activity. Antibody products are stable for twelve months from date of receipt when stored at -20°C to -80°C.

Preservative-Free.

Sodium azide is recommended to avoid contamination (final concentration 0.05%-0.1%). It is toxic to cells and should be disposed of properly. Avoid repeated freeze-thaw cycles.

## Clonality

Polyclonal

## Ig Type

Rabbit IgG

## Applications

ELISA, WB, IP

## Dilutions

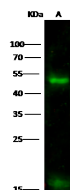
WB: 10-20 µg/ml

ELISA: 0.1-0.2 µg/mL

This antibody can be used at 0.1-0.2 µg/mL with the appropriate secondary reagents to detect Human TGF-beta 1 / TGFB1. The detection limit for Human TGF-beta 1 / TGFB1 is < 0.039 ng/well.

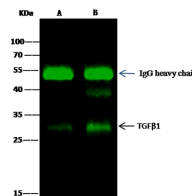
IP: 4-6 µg/mg of lysate

## Validations



Lanes	A
Items	
Sample (whole cell lysate)	K562
Sample Volume (µg/lane)	30
Gel	13% SDS-PAGE reducing gel
Recommended Concentration	10 µg/ml
Secondary Antibody	Dylight 800-labeled Antibody to Rabbit IgG (1:1), at 1:5000 dilution. Developed using Odyssey imaging system.
Explanation	Predicted band size : 44 kDa Observed band size : 50 kDa

TGF-beta 1 / TGFB1 Antibody, Rabbit PAb, Antigen Affinity Purified, Western blot



Lanes	A	B
Items		
Sample (whole cell lysate)	MCF-7	A549
Sample quantity	0.5 mg	
IP antibody quantity	2 µg	
Protein G agarose	15 µl of 50% Protein G Agarose	
Gel	13% SDS-PAGE reducing gel	
Primary antibody	TGF-beta 1 antibody at 10 µg/ml [Cat# 10804-0P02]	
Secondary antibody	Dylight 800-labeled antibody to rabbit IgG (1:1), at 1:5000 dilution.	

TGF-beta 1 / TGFB1 Antibody, Rabbit PAb, Antigen Affinity Purified, Immunoprecipitation