

Anti-alpha Internexin/NEF5 antibody



Catalog Number: 105673

Product name

Anti-alpha Internexin/NEF5 antibody

Specificity

Human INA

Antibody description

Rabbit polyclonal to alpha Internexin/NEF5

Preparation

Produced in rabbits immunized with a synthetic peptide corresponding to the center region of the Human INA, and purified by antigen affinity chromatography.

Formulation

0.2 µm filtered solution in PBS

Storage

This antibody can be stored at 2°C-8°C for one month without detectable loss of activity. Antibody products are stable for twelve months from date of receipt when stored at -20°C to -80°C.

Preservative-Free.

Sodium azide is recommended to avoid contamination (final concentration 0.05%-0.1%). It is toxic to cells and should be disposed of properly. Avoid repeated freeze-thaw cycles.

Clonality

Polyclonal

Ig Type

Rabbit IgG

Applications

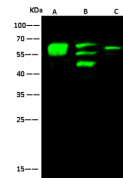
WB, IP

Dilutions

WB: 2-10 µg/ml

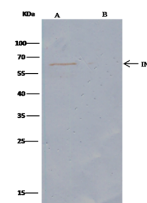
IP: 4-6 µg/mg of lysate

Validations



Lanes	A	B	C
Sample	Mouse brain tissue lysate	rat brain tissue lysate	SHSY5Y (whole cell lysate)
Sample Volume (µg/lane)	30	30	30
Gel	13% SDS-PAGE reducing gel		
Recommended Concentration	2-10 µg/ml		
Secondary Antibody	Dylight 800-labeled Antibody to Rabbit IgG (H+L), at 1:5000 dilution.		
Explanation	Developed using Odyssey imaging system. Predicted band size : 55 kDa Observed band size : 55 kDa Additional bands at : 58 kDa and 45 kDa (We are unsure as to the identity of these extra bands. They are possible non-specific bindings).		

INA Antibody, Rabbit PAb, Antigen Affinity Purified, Western blot



Lanes	A	B
Sample (whole cell lysate)	SHSY5Y	
Sample quantity	0.5 mg	
IP antibody type	KLH-SMCC-SINOAS64-IP02	Rabbit blank IgG
IP antibody quantity	2 µg	
Protein G agarose	15 µl of 50% Protein G Agarose	
Gel	13% SDS-PAGE reducing gel	
Primary antibody	KLH-SMCC-SINOAS64 antibody at 10 µg/ml	
Secondary antibody	Cleav-6600 IP Detection Reagent (HRP) at 1:1000 dilution	

INA Antibody, Rabbit PAb, Antigen Affinity Purified, Immunoprecipitation