

Anti-CD166/ALCAM antibody



Catalog Number: 105666

Product name

Anti-CD166/ALCAM antibody

Immunogen

[Rat CD166/ALCAM \(His Tag\) recombinant protein](#)

Specificity

Rat CD166 / ALCAM

Has cross-reactivity in ELISA with Human ALCAM

No cross-reactivity in ELISA with Human BCAM

Antibody description

Rabbit monoclonal to CD166/ALCAM

Preparation

This antibody was obtained from a rabbit immunized with purified, recombinant Rat CD166 / ALCAM (rh CD166 / ALCAM; O35112; Met1-Lys527).

Formulation

0.2 µm filtered solution in PBS

Storage

This antibody can be stored at 2°C-8°C for one month without detectable loss of activity. Antibody products are stable for twelve months from date of receipt when stored at -20°C to -80°C.

Preservative-Free.

Sodium azide is recommended to avoid contamination (final concentration 0.05%-0.1%). It

is toxic to cells and should be disposed of properly. Avoid repeated freeze-thaw cycles.

Clonality

Monoclonal

Ig Type

Rabbit IgG

Applications

ELISA, WB

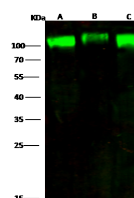
Dilutions

WB: 1-10 µg/ml

ELISA: 0.1-0.2 µg/mL

This antibody can be used at 0.1-0.2 µg/mL with the appropriate secondary reagents to detect Rat CD166 / ALCAM. The detection limit for Rat CD166 / ALCAM is 0.00975 ng/well.

Validations



Items	Lanes	A	B	C
Sample (whole cell lysate)		SH-SY5Y	Daudi	HuT78
Sample Volume (µg/lane)		30	30	30
Gel	13% SDS-PAGE reducing gel			
Recommended Concentration	1-10 µg/ml			
Secondary Antibody	Dylight 800-labeled Antibody to Rabbit IgG (H+L) at 1:2000 dilution.			
Developed using Odyssey imaging system.				
Explanation	Predicted band size : 65 kDa Observed band size : 100 kDa			

CD166 / ALCAM Antibody, Rabbit MAb