

# Anti-Human Serum Albumin / HSA / HAS / ALB antibody



Catalog Number: 105659

## Product name

Anti-Human Serum Albumin / HSA / HAS / ALB antibody

## Specificity

Human Serum Albumin / HSA

**No cross-reactivity** in ELISA with Bovine serum albumin / BSA

## Antibody description

Rabbit monoclonal to Human Serum Albumin / HSA / HAS / ALB

## Preparation

This antibody was obtained from a rabbit immunized with purified Human Serum Albumin, and conjugated with FITC under optimum conditions, the unreacted FITC was removed.

## Formulation

Aqueous solution containing 0.5% BSA and 0.09% sodium azide

## Storage

This antibody is stable for 12 months from date of receipt when stored at 2°C-8°C. Protected from prolonged exposure to light. Do not freeze ! Sodium azide is toxic to cells and should be disposed of properly. Flush with large volumes of water during disposal.

## Clonality

Monoclonal

## Ig Type

Rabbit IgG

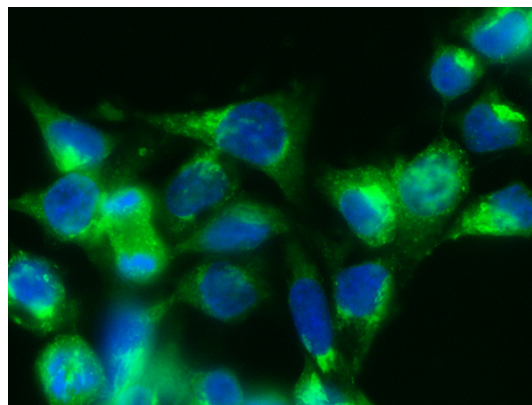
## Applications

FCM, IF, ICC/IF

## Dilutions

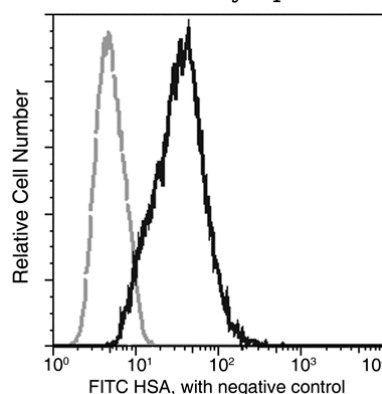
ICC/IF: 10-25 µg/mL

## Validations



Human Serum Albumin / HSA / ALB Antibody (FITC), Rabbit MAb, Immunofluorescence

Immunofluorescence staining of Human HSA in HepG2 cells. Cells were fixed with 4% PFA, permeabilized with 0.3% Triton X-100 in PBS, blocked with 10% serum, and incubated with FITC-conjugated rabbit anti-Human HSA monoclonal antibody (10 µg/ml) at 37°C 1 hour and counterstained with DAPI. Positive staining was localized to cytoplasm.



Human Serum Albumin / HSA / ALB Antibody (FITC), Rabbit MAb, Flow cytometric analysis

Flow cytometric analysis of Human HSA expression on HepG2 cells. The cells were treated according to manufacturer's manual (BD Pharmingen™ Cat. No. 554714), and then stained with FITC-conjugated anti-Human HSA. The

# Anti-Human Serum Albumin / HSA / HAS / ALB antibody



Catalog Number: 105659

---

fluorescence histograms were derived from gated

events with the forward and side light-scatter characteristics of intact cells.