

Anti-SUMO2 antibody



Catalog Number: 105535

Product name

Anti-SUMO2 antibody

Specificity

Human SUMO2

Antibody description

Rabbit polyclonal to SUMO2

Preparation

Produced in rabbits immunized with a synthetic peptide corresponding to the center region of the Human SUMO2, and purified by antigen affinity chromatography.

Formulation

0.2 µm filtered solution in PBS

Storage

This antibody can be stored at 2°C-8°C for one month without detectable loss of activity. Antibody products are stable for twelve months from date of receipt when stored at -20°C to -80°C.

Preservative-Free.

Sodium azide is recommended to avoid contamination (final concentration 0.05%-0.1%). It is toxic to cells and should be disposed of properly. Avoid repeated freeze-thaw cycles.

Clonality

Polyclonal

Ig Type

Rabbit IgG

Applications

WB, IF, IP, ICC/IF

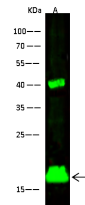
Dilutions

WB: 1-10 µg/ml

ICC/IF: 0.5-1.5 µg/mL

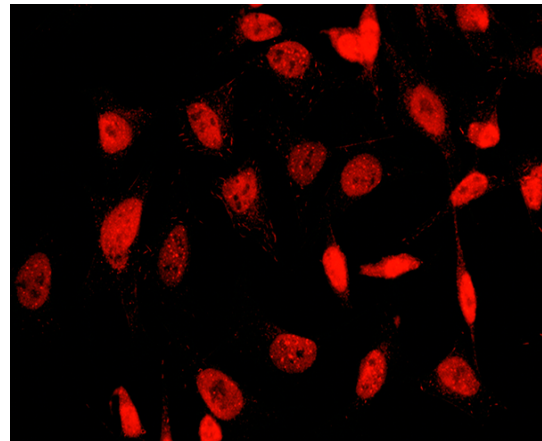
IP: 1-4 µg/mg of lysate

Validations



Items	Lanes	A
Sample (whole cell lysate)		SW480
Sample Volume (µg/lane)		30
Gel		13% SDS-PAGE reducing gel
Recommended Concentration		1-10 µg/ml
Secondary Antibody		Dylight 800 labeled Antibody to Rabbit IgG (H+L), at 1:5000 dilution.
Developed using Odyssey imaging system.		
Explanation		Predicted band size : 12 kDa Observed band size : 17 kDa Additional bands at : 55 kDa and 36 kDa [We are unsure as to the identity of these extra bands.]

SUMO2 Antibody, Rabbit PAb, Antigen Affinity Purified, Western blot

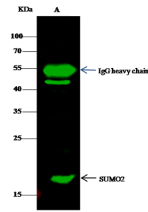


SUMO2 Antibody, Rabbit PAb, Antigen Affinity Purified, Immunofluorescence

Immunofluorescence staining of SUMO2 in HeLa cells. Cells were fixed with 4% PFA, blocked with 10% serum, and incubated with rabbit anti-human SUMO2 polyclonal antibody (1 µg/ml) at 4°C overnight. Then cells were stained with the Alexa Fluor®594-conjugated Goat Anti-rabbit IgG secondary antibody (red). Positive staining was

Anti-SUMO2 antibody

Catalog Number: 105535



SUMO2 Antibody, Rabbit PAb, Antigen Affinity Purified, Immunoprecipitation

Lanes	A
Sample (whole cell lysate)	SW480
Sample quantity	0.5 mg
IP antibody quantity	2 µg
Protein G agarose	15 µl of 50% Protein G Agarose
Gel	13% SDS-PAGE reducing gel
Primary antibody	KLH-SMCC-SINO1083 antibody at 5 µg/ml
Secondary antibody	DyLight 800-labeled antibody to rabbit IgG (H+L) at 1:5000 dilution

localized to nucleus..