

# Anti-H1F0/Histone H1 antibody



Catalog Number: 105517

## Product name

Anti-H1F0/Histone H1 antibody

## Specificity

Human H1F0 / Histone H1

## Antibody description

Rabbit polyclonal to H1F0/Histone H1

## Preparation

Produced in rabbits immunized with a synthetic peptide corresponding to the center region of the Human H1F0 / Histone H1, and purified by antigen affinity chromatography.

## Formulation

0.2 µm filtered solution in PBS

## Storage

This antibody can be stored at 2°C-8°C for one month without detectable loss of activity. Antibody products are stable for twelve months from date of receipt when stored at -20°C to -80°C.

Preservative-Free.

Sodium azide is recommended to avoid contamination (final concentration 0.05%-0.1%). It is toxic to cells and should be disposed of properly. Avoid repeated freeze-thaw cycles.

## Clonality

Polyclonal

## Ig Type

Rabbit IgG

## Applications

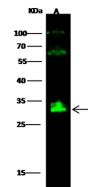
WB, IP

## Dilutions

WB: 5-10 µg/ml

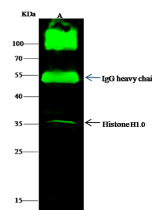
IP: 1-4 µg/mg of lysate

## Validations



Items	Lanes	A
Sample (whole cell lysate)		HepG2
Sample Volume (µg/lane)		30
Gel		13% SDS-PAGE reducing gel
Recommended Concentration		5-10 µg/ml
Secondary Antibody		Dylight 800-labeled Antibody to Rabbit IgG (1+1), at 1:5000 dilution.
Explanation		Developed using Odyssey imaging system. Predicted band size : 21 kDa Observed band size : 35 kDa Additional bands at : 100 kDa and 58 kDa (We are unsure as to the identity of these extra bands.)

H1F0 / Histone H1 Antibody, Rabbit PAb, Antigen Affinity Purified, Western blot



Items	Lanes	A
Sample (whole cell lysate)		Hef.a
Sample quantity		0.5 mg
IP antibody quantity		2 µg
Immunospecific bands Protein G		60 µg
Gel		13% SDS-PAGE reducing gel
Primary antibody		KLH-SMCC-SINO1303 antibody at 10 µg/ml
Secondary antibody		Dylight 800-labeled antibody to Rabbit IgG (1+1), at 1:5000 dilution

H1F0 / Histone H1 Antibody, Rabbit PAb, Antigen Affinity Purified, Immunoprecipitation