

# Anti-KRT5/Cytokeratin5 antibody



Catalog Number: 105513

## Product name

Anti-KRT5/Cytokeratin5 antibody

## Specificity

Human KRT5

## Antibody description

Rabbit polyclonal to KRT5/Cytokeratin5

## Preparation

Produced in rabbits immunized with A synthetic peptide corresponding to the center region of the human KRT5 , and purified by antigen affinity chromatography.

## Formulation

0.2 µm filtered solution in PBS

## Storage

This antibody can be stored at 2°C-8°C for one month without detectable loss of activity. Antibody products are stable for twelve months from date of receipt when stored at -20°C to -80°C.

Preservative-Free.

Sodium azide is recommended to avoid contamination (final concentration 0.05%-0.1%). It is toxic to cells and should be disposed of

properly. Avoid repeated freeze-thaw cycles.

## Clonality

Polyclonal

## Ig Type

Rabbit IgG

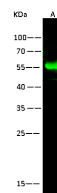
## Applications

WB

## Dilutions

WB: 0.2-0.5 µg/mL

## Validations



Lanes	A
Sample (whole cell lysate)	HCT116
Sample Volume (µg/lane)	30
Gel	13% SDS-PAGE reducing gel
Recommended Concentration	0.2-0.5µg/ml
Secondary Antibody	DyLight 800-labeled Antibody to Rabbit IgG (H+L), at 1:5000 dilution.
Developed	using Odyssey imaging system.
Explanation	Predicted band size : 62 kDa Observed band size : 55 kDa

KRT5 Antibody, Rabbit PAb, Antigen Affinity Purified, Western blot