

# Anti-ERH antibody



Catalog Number: 105457

## Product name

Anti-ERH antibody

## Immunogen

[Human ERH \(His Tag\) recombinant protein](#)

## Specificity

Human ERH

## Antibody description

Rabbit polyclonal to ERH

## Preparation

Produced in rabbits immunized with purified, recombinant Human ERH (rh ERH; P84090; Met1-Lys104). ERH specific IgG was purified by Human ERH affinity chromatography.

## Formulation

0.2 µm filtered solution in PBS

## Storage

This antibody can be stored at 2°C-8°C for one month without detectable loss of activity. Antibody products are stable for twelve months from date of receipt when stored at -20°C to -80°C.

Preservative-Free.

Sodium azide is recommended to avoid

contamination (final concentration 0.05%-0.1%). It is toxic to cells and should be disposed of properly. Avoid repeated freeze-thaw cycles.

## Clonality

Polyclonal

## Ig Type

Rabbit IgG

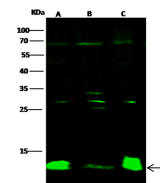
## Applications

WB

## Dilutions

WB: 2-10 µg/ml

## Validations



Lanes	A	B	C
Items			
Sample (whole cell lysate)	SH-SY5Y	A549	NCI-H1299
Sample Volume (µg/lane)	30	30	30
Gel	13% SDS-PAGE reducing gel		
Recommended Concentration	2-10 µg/ml		
Secondary Antibody	Dylight 800 labeled Antibody to Rabbit IgG (H+), at 1:5000 dilution.		
Explanation	Developed using Odyssey imaging system. Predicted band size : 12 kDa Observed band size : 12 kDa Additional bands at : 65 kDa, 33 kDa, 27 kDa and 25 kDa (We are unsure as to the identity of these extra bands.)		

ERH Antibody, Rabbit PAb, Antigen Affinity Purified, Western blot