

Anti-SYP antibody



Catalog Number: 105412

Product name

Anti-SYP antibody

Specificity

Human SYP

Antibody description

Rabbit polyclonal to SYP

Preparation

Produced in rabbits immunized with A synthetic peptide corresponding to the C-terminus of the human Synaptophysin , and purified by antigen affinity chromatography.

Formulation

0.2 µm filtered solution in PBS

Storage

This antibody can be stored at 2°C-8°C for one month without detectable loss of activity. Antibody products are stable for twelve months from date of receipt when stored at -20°C to -80°C.

Preservative-Free.

Sodium azide is recommended to avoid contamination (final concentration 0.05%-0.1%). It is toxic to cells and should be disposed of properly. Avoid repeated freeze-thaw cycles.

Clonality

Polyclonal

Ig Type

Rabbit IgG

Applications

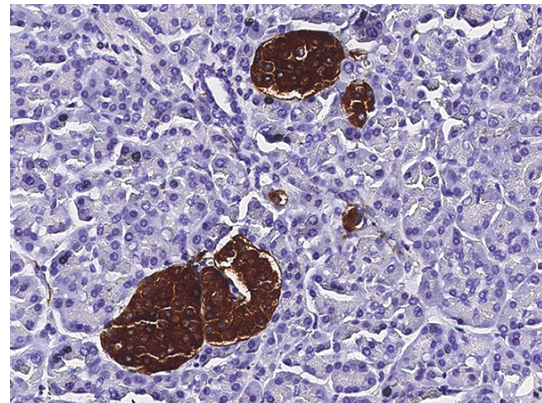
WB, IHC-P

Dilutions

WB: 2-10 µg/mL

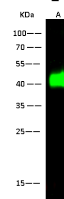
IHC-P: 0.1-2 µg/mL

Validations



Synaptophysin Antibody, Rabbit PAb, Antigen Affinity Purified, Immunohistochemistry

Immunochemical staining of human SYP in human pancreas with rabbit polyclonal antibody (0.2 µg/mL, formalin-fixed paraffin embedded



Lanes	A
Items	
Sample (whole cell lysate)	PC12
Sample Volume (µg/lane)	30
Gel	13%SDS-PAGE reducing gel
Recommended Concentration	2-10 µg/ml
Secondary Antibody	Dylight 800 labeled Antibody to Rabbit IgG (H+L), at 1:5000 dilution.
Developed using Odyssey imaging system.	
Explanation	Predicted band size : 34 kDa Observed band size : 42 kDa

sections).

Synaptophysin Antibody, Rabbit PAb, Antigen Affinity Purified, Western blot