

# Anti-PRMT6 antibody



Catalog Number: 105405

## Product name

Anti-PRMT6 antibody

## Specificity

Human PRMT6

## Antibody description

Rabbit polyclonal to PRMT6

## Preparation

Produced in rabbits immunized with a synthetic peptide corresponding to the center region of the Human PRMT6, and purified by antigen affinity chromatography.

## Formulation

0.2  $\mu\text{m}$  filtered solution in PBS

## Storage

This antibody can be stored at 2°C-8°C for one month without detectable loss of activity. Antibody products are stable for twelve months from date of receipt when stored at -20°C to -80°C.

Preservative-Free.

Sodium azide is recommended to avoid contamination (final concentration 0.05%-0.1%). It is toxic to cells and should be disposed of properly. Avoid repeated freeze-thaw cycles.

## Clonality

Polyclonal

## Ig Type

Rabbit IgG

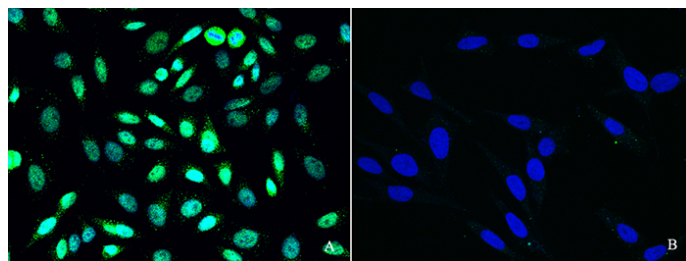
## Applications

IF, ICC/IF

## Dilutions

ICC/IF: 0.5-1.5  $\mu\text{g}/\text{mL}$

## Validations



PRMT6 Antibody, Rabbit PAb, Antigen Affinity Purified, Immunofluorescence

Immunofluorescence staining of PRMT6 in HeLa cells. Cells were fixed with 4% PFA, blocked with 10% serum. Then incubated with rabbit anti-human PRMT6 polyclonal antibody (1  $\mu\text{g}/\text{ml}$ ) (Figure A), incubated with rabbit anti-human PRMT6 polyclonal antibody and antigen (Figure B) at 4°C overnight. Then cells were stained with the Alexa Fluor®488-conjugated Goat Anti-rabbit IgG secondary antibody (green) and counterstained with DAPI (blue). Positive staining was localized to nucleus.