

Anti-CoV Spike glycoprotein antibody



Catalog Number: 105389

Product name

Anti-CoV Spike glycoprotein antibody

Immunogen

[SARS CoV Spike glycoprotein \(His Tag\)](#)

Specificity

Human SARS Coronavirus Spike S1 Subunit

Antibody description

Rabbit polyclonal to CoV Spike glycoprotein

Preparation

Produced in rabbits immunized with purified, recombinant Human SARS Coronavirus Spike S1 Subunit (rh Human SARS Coronavirus Spike S1 Subunit; AAX16192.1; Met1-Arg667). Human SARS Coronavirus Spike S1 Subunit specific IgG was purified by Human SARS Coronavirus Spike S1 Subunit affinity chromatography.

Formulation

0.2 µm filtered solution in PBS

Storage

This antibody can be stored at 2°C-8°C for one month without detectable loss of activity. Antibody products are stable for twelve months from date of receipt when stored at -20°C to -80°C.

Preservative-Free.

Sodium azide is recommended to avoid contamination (final concentration 0.05%-0.1%). It is toxic to cells and should be disposed of properly. Avoid repeated freeze-thaw cycles.

Clonality

Polyclonal

Ig Type

Rabbit IgG

Applications

ELISA, WB, IHC-P, IP

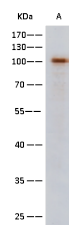
Dilutions

WB: 0.5-1 µg/ml

ELISA: 0.1-0.2 µg/mL

This antibody can be used at 0.1-0.2 µg/mL with the appropriate secondary reagents to detect Human SARS Coronavirus Spike S1 Subunit. The detection limit for Human SARS Coronavirus Spike S1 Subunit is < 0.039 ng/well.

Validations



Items	Lanes
Sample (Recombinant protein)	A SARS-Spike-S1-His(1-667)
Sample Volume (ng/lane)	30ng
Gel	13% SDS-PAGE reducing gel
Recommended Concentration	1µg/ml
Secondary Antibody	HRP Conjugated Goat anti-rabbit IgG (His1) at 1:1000 dilution

Human SARS Coronavirus Spike S1 Subunit Antibody, Rabbit PAb, Antigen Affinity Purified, Western blot