

Anti-Chromogranin A antibody



Catalog Number: 105315

Product name

Anti-Chromogranin A antibody

WB: 2-10 µg/mL

IHC-P: 0.05-1 µg/mL

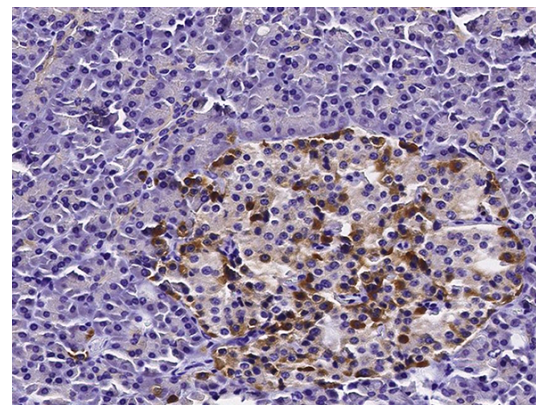
Specificity

Human CHGA

Validations

Antibody description

Rabbit polyclonal to Chromogranin A



Preparation

Produced in rabbits immunized with A synthetic peptide corresponding to the N-terminus of the human Chromogranin A., and purified by antigen affinity chromatography.

Chromogranin A Antibody, Rabbit PAb, Antigen Affinity Purified, Immunohistochemistry

Formulation

0.2 µm filtered solution in PBS

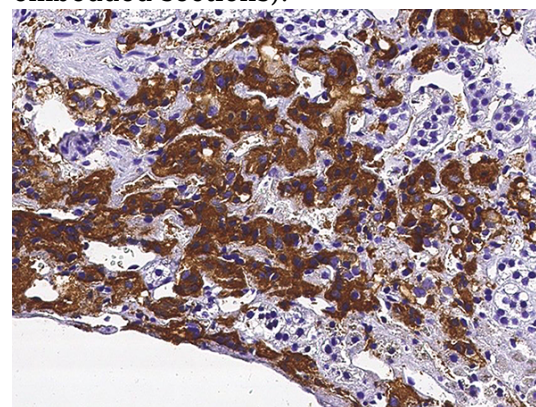
Immunochemical staining of human Chromogranin A in human pancreas with rabbit polyclonal antibody (0.05 µg/mL, formalin-fixed paraffin embedded sections).

Storage

This antibody can be stored at 2°C-8°C for one month without detectable loss of activity. Antibody products are stable for twelve months from date of receipt when stored at -20°C to -80°C.

Preservative-Free.

Sodium azide is recommended to avoid contamination (final concentration 0.05%-0.1%). It is toxic to cells and should be disposed of properly. Avoid repeated freeze-thaw cycles.



Chromogranin A Antibody, Rabbit PAb, Antigen Affinity Purified, Immunohistochemistry

Clonality

Polyclonal

Ig Type

Rabbit IgG

Immunochemical staining of human Chromogranin A in human adrenal gland with rabbit polyclonal antibody (0.05 µg/mL, formalin-fixed paraffin

Applications

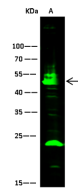
WB, IHC-P

Dilutions

Anti-Chromogranin A antibody



Catalog Number: 105315



Chromogranin A Antibody, Rabbit PAb, Antigen Affinity Purified, Western blot

Lanes	A
Items	
Sample (whole cell lysate)	HepG2
Sample Volume (µg/lane)	30
Gel	13% SDS-PAGE reducing gel
Recommended Concentration	2-10 µg/ml
Secondary Antibody	Dylight 800-labeled Antibody To Rabbit IgG (H+L), at 1:5000 dilution
Explanation	Developed using Odyssey imaging system. Predicted band size : 50 kDa Observed band size : 50 kDa Additional bands at : 24 kDa (We are unsure as to the identity of these extra bands. They are possible non-specific bindings).

embedded sections).