

Anti-GAPDH antibody



Catalog Number: 105276

Product name

Anti-GAPDH antibody

WB: 5-10 µg/mL

IHC-P: 0.1-2 µg/mL

Specificity

Human GAPDH

Validations

Antibody description

Rabbit polyclonal to GAPDH

Preparation

Produced in rabbits immunized with A synthetic peptide corresponding to the center region of the human GAPDH, and purified by antigen affinity chromatography.

Formulation

0.2 µm filtered solution in PBS

Storage

This antibody can be stored at 2°C-8°C for one month without detectable loss of activity. Antibody products are stable for twelve months from date of receipt when stored at -20°C to -80°C.

Preservative-Free.

Sodium azide is recommended to avoid contamination (final concentration 0.05%-0.1%). It is toxic to cells and should be disposed of properly. Avoid repeated freeze-thaw cycles.

Clonality

Polyclonal

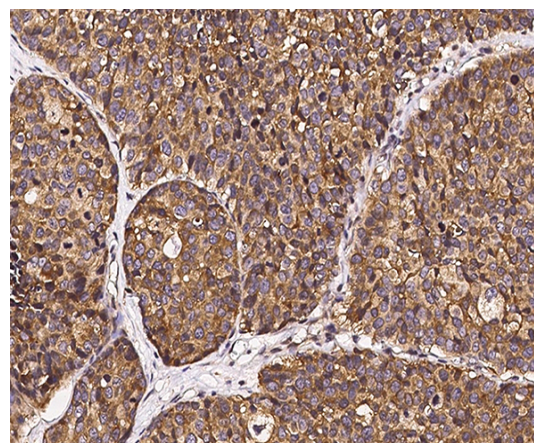
Ig Type

Rabbit IgG

Applications

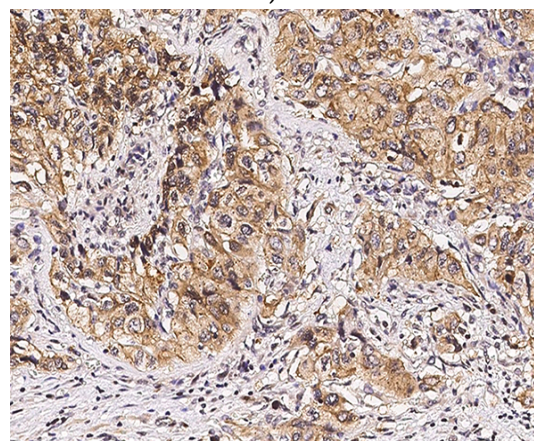
WB, IHC-P

Dilutions



GAPDH Antibody, Rabbit PAb, Antigen Affinity Purified, Immunohistochemistry

Immunochemical staining of human GAPDH in human breast carcinoma with rabbit polyclonal antibody (1 µg/mL, formalin-fixed paraffin embedded sections).



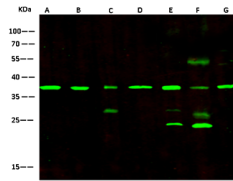
GAPDH Antibody, Rabbit PAb, Antigen Affinity Purified, Immunohistochemistry

Immunochemical staining of human GAPDH in human renal carcinoma with rabbit polyclonal antibody (1 µg/mL, formalin-fixed paraffin embedded sections).

Anti-GAPDH antibody



Catalog Number: 105276



GAPDH Antibody, Rabbit PAb, Antigen Affinity Purified, Western blot

Lanes	A	B	C	D	E	F	G
Rems							
Sample	Jurkat[whole cell lysate]	MCF7[whole cell lysate]	Mouse brain tissue lysate	Rat brain tissue lysate	Rabbit brain tissue lysate	Rabbit spleen tissue lysate	K562[whole cell lysate]
Sample Volume (µg/lane)	30	60	60	60	60	60	60
Gel	13% SDS-PAGE reducing gel						
Recommended Concentration	5-10 µg/ml						
Secondary Antibody	Dylight 800 labeled Antibody To Rabbit IgG (H+L), at 1:5000 dilution.						
	Developed using Odyssey imaging system.						
Explanation	Predicted band size : 36 kDa Observed band size : 37 kDa Additional bands at : 55 kDa, 27 kDa and 24 kDa (We are unsure as to the identity of these extra bands. They are possible non-specific bindings).						