

# Anti-EphB2/Eph Receptor B2 antibody



Catalog Number: 105226

## Product name

Anti-EphB2/Eph Receptor B2 antibody

## Specificity

Human EPHB2

## Antibody description

Rabbit polyclonal to EphB2/Eph Receptor B2

## Preparation

Produced in rabbits immunized with A synthetic peptide corresponding to the N-terminus of the human EPHB2., and purified by antigen affinity chromatography.

## Formulation

0.2 µm filtered solution in PBS

## Storage

This antibody can be stored at 2°C-8°C for one month without detectable loss of activity. Antibody products are stable for twelve months from date of receipt when stored at -20°C to -80°C.

Preservative-Free.

Sodium azide is recommended to avoid contamination (final concentration 0.05%-0.1%). It is toxic to cells and should be disposed of properly. Avoid repeated freeze-thaw cycles.

## Clonality

Polyclonal

## Ig Type

Rabbit IgG

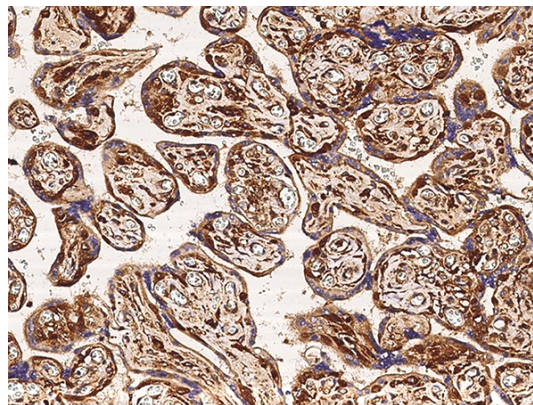
## Applications

IHC-P

## Dilutions

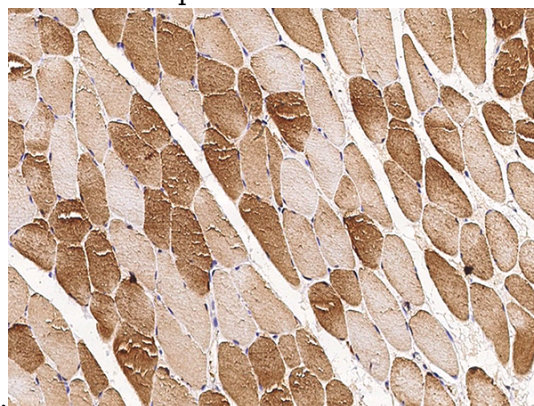
IHC-P: 1-5 µg/mL

## Validations



EPHB2 antibody, Rabbit PAb, Antigen Affinity Purified, Immunohistochemistry

Immunochemical staining of human EPHB2 in human placenta with rabbit polyclonal antibody (3 µg/mL, formalin-fixed paraffin embedded



sections).

EPHB2 antibody, Rabbit PAb, Antigen Affinity Purified, Immunohistochemistry

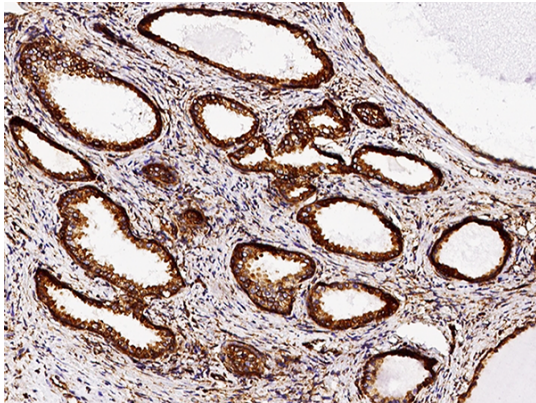
Immunochemical staining of human EPHB2 in human skeletal muscle with rabbit polyclonal antibody (3 µg/mL, formalin-fixed paraffin embedded sections).

# Anti-EphB2/Eph Receptor B2 antibody



Catalog Number: 105226

---



EPHB2 antibody, Rabbit PAb, Antigen Affinity Purified, Immunohistochemistry