

# Anti-RHCE antibody



Catalog Number: 105217

## Product name

Anti-RHCE antibody

## Specificity

Human RHCE/CD240CE

## Antibody description

Rabbit polyclonal to RHCE

## Preparation

Produced in rabbits immunized with a synthetic peptide corresponding to the center region of the Human RHCE/CD240CE, and purified by antigen affinity chromatography.

## Formulation

0.2 µm filtered solution in PBS

## Storage

This antibody can be stored at 2°C-8°C for one month without detectable loss of activity. Antibody products are stable for twelve months from date of receipt when stored at -20°C to -80°C.

Preservative-Free.

Sodium azide is recommended to avoid contamination (final concentration 0.05%-0.1%). It is toxic to cells and should be disposed of

properly. Avoid repeated freeze-thaw cycles.

## Clonality

Polyclonal

## Ig Type

Rabbit IgG

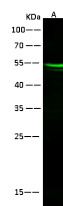
## Applications

WB

## Dilutions

WB: 10-20 µg/ml

## Validations



Items	Lanes	A
Sample (whole cell lysate)		MCF7
Sample Volume (µg/lane)		30
Gel		13%SDS-PAGE reducing gel
Recommended Concentration		10-20µg/ml
Secondary Antibody		Dylight 800-labeled Antibody to Rabbit IgG (H+L), at 1:5000 dilution.
Developed using Odyssey imaging system.		
Explanation		Predicted band size : 46 kDa Observed band size : 54 kDa

RHCE / CD240CE Antibody, Rabbit PAb, Antigen Affinity Purified, Western blot