

Anti-K-ATPase 3 subunit/ATP1B3 antibody



Catalog Number: 105169

Product name

Anti-K-ATPase 3 subunit/ATP1B3 antibody

Specificity

Human ATP1B3/CD298

Antibody description

Rabbit polyclonal to K-ATPase 3 subunit/ATP1B3

Preparation

Produced in rabbits immunized with a synthetic peptide corresponding to the center region of the Human ATP1B3/CD298, and purified by antigen affinity chromatography.

Formulation

0.2 µm filtered solution in PBS

Storage

This antibody can be stored at 2°C-8°C for one month without detectable loss of activity. Antibody products are stable for twelve months from date of receipt when stored at -20°C to -80°C.

Preservative-Free.

Sodium azide is recommended to avoid contamination (final concentration 0.05%-0.1%). It is toxic to cells and should be disposed of

properly. Avoid repeated freeze-thaw cycles.

Clonality

Polyclonal

Ig Type

Rabbit IgG

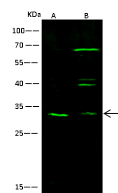
Applications

WB

Dilutions

WB: 10-20 µg/ml

Validations



Lanes	A	B
Items		
Sample (whole cell lysate)	Hela	A431
Sample Volume (µg/lane)	30	30
Gel	13% SDS-PAGE reducing gel	
Recommended Concentration	10-20 µg/ml	
Secondary Antibody	Dylight800-labeled Antibody to Rabbit IgG (H+L) at 1:5000 dilution.	
Developed using Odyssey imaging system.		
Explanation	Predicted band size: 32 kDa Observed band size: 32 kDa Additional bands at: 65 kDa, 40 kDa and 39 kDa (We are unsure as to the identity of these extra bands.)	

ATP1B3 / CD298 Antibody, Rabbit PAb, Antigen Affinity Purified, Western blot