

Anti-FCRL1/FCRH1 antibody



Catalog Number: 105142

Product name

Anti-FCRL1/FCRH1 antibody

Immunogen

[Mouse FCRL1/FCRH1 \(His Tag\) recombinant protein](#)

Specificity

Mouse FCRL1 / FCRH1

Antibody description

Rabbit polyclonal to FCRL1/FCRH1

Preparation

Produced in rabbits immunized with purified, recombinant Mouse FCRL1 / FCRH1 (rh FCRL1 / FCRH1; Q8R4Y0-2; Met1-Thr204). FCRL1 / FCRH1 specific IgG was purified by Mouse FCRL1 / FCRH1 affinity chromatography.

Formulation

0.2 μ m filtered solution in PBS

Storage

This antibody can be stored at 2°C-8°C for one month without detectable loss of activity. Antibody products are stable for twelve months from date of receipt when stored at -20°C to -80°C.

Preservative-Free.

Sodium azide is recommended to avoid contamination (final concentration 0.05%-0.1%). It is toxic to cells and should be disposed of properly. Avoid repeated freeze-thaw cycles.

Clonality

Polyclonal

Ig Type

Rabbit IgG

Applications

ELISA, WB, IP

Dilutions

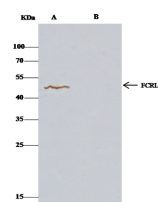
WB: 10-20 μ g/mL

ELISA: 0.1-0.2 μ g/mL

This antibody can be used at 0.1-0.2 μ g/mL with the appropriate secondary reagents to detect Mouse FCRL1 / FCRH1. The detection limit for Mouse FCRL1 / FCRH1 is < 0.039 ng/well.

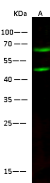
IP: 1-4 μ g/mg of lysate

Validations



Lanes	A	B
Items	HepG2	
Sample (whole cell lysate)	0.5 mg	
IP antibody type	mFCRL1-His-RFP02	Rabbit Blank IgG
IP antibody quantity	2 μ g	
Protein G agarose	15 μ l of 50% Protein G Agarose	
Gel	13% SDS-PAGE reducing gel	
Primary antibody	mFCRL1-His antibody at 5 μ g/ml	
Secondary antibody	Clon-Block IP Detection Reagent (HRP) at 1:1000 dilution	

FCRL1 / FCRH1 Antibody, Rabbit PAb, Antigen Affinity Purified, Immunoprecipitation



Lanes	A
Items	HepG2
Sample (whole cell lysate)	
Sample Volume (μ g/lane)	30
Recommended concentration	13% SDS-PAGE reducing gel
Secondary Antibody	Dylight 800-labeled Antibody to Rabbit IgG (HRP) at 1:5000 dilution.
Explanation	Developed using Odyssey imaging system.
	Predicted band size : 47 kDa
	Observed band size : 47 kDa
	Additional bands at : 65 kDa (We are unsure as to the identity of these extra bands.

FCRL1 / FCRH1 Antibody, Rabbit PAb, Antigen Affinity Purified, Western blot