

Anti-CPVL antibody



Catalog Number: 105129

Product name

Anti-CPVL antibody

Immunogen

[Human CPVL \(His Tag\) recombinant protein](#)

Specificity

Human CPVL

Antibody description

Rabbit polyclonal to CPVL

Preparation

Produced in rabbits immunized with purified, recombinant Human CPVL (rh CPVL; AAH16838.1; Met1-Gly476). CPVL specific IgG was purified by Human CPVL affinity chromatography.

Formulation

0.2 µm filtered solution in PBS

Storage

This antibody can be stored at 2°C-8°C for one month without detectable loss of activity. Antibody products are stable for twelve months from date of receipt when stored at -20°C to -80°C.

Preservative-Free.

Sodium azide is recommended to avoid contamination (final concentration 0.05%-0.1%). It is toxic to cells and should be disposed of properly. Avoid repeated freeze-thaw cycles.

Clonality

Polyclonal

Ig Type

Rabbit IgG

Applications

ELISA, WB, IHC-P, IP

Dilutions

WB: 5-10 µg/mL

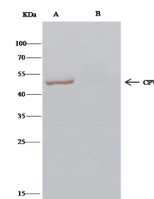
ELISA: 0.1-0.2 µg/mL

This antibody can be used at 0.1-0.2 µg/mL with the appropriate secondary reagents to detect Human CPVL. The detection limit for Human CPVL is < 0.039 ng/well.

IHC-P: 0.1-1 µg/mL

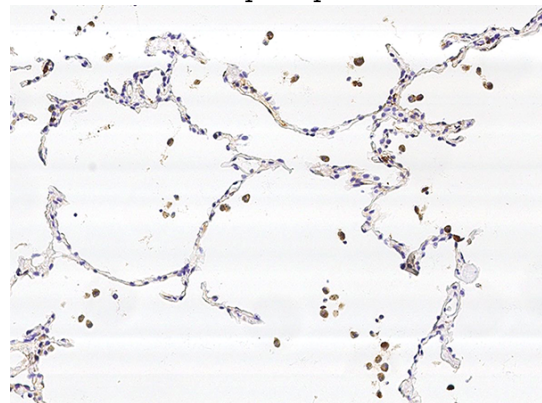
IP: 1-4 µg/mg of lysate

Validations



Item	Lanes	A	B
Sample (whole cell lysate)	HepG2		
Sample quantity	0.5 mg		
IP antibody type	CPVL-His-RP02	Rabbit Blank IgG	
IP antibody quantity	2 µg		
Protein G agarose	1.5 µl of 50% Protein G Agarose		
Gel	13% SDS-PAGE reagent/gel		
Primary antibody	CPVL-His antibody at 5 µg/ml		
Secondary antibody	Clean-Blot IP Detection Reagent (HRP) at 1:1000 dilution		

CPVL Antibody, Rabbit PAb, Antigen Affinity Purified, Immunoprecipitation



CPVL Antibody, Rabbit PAb, Antigen Affinity Purified, Immunohistochemistry

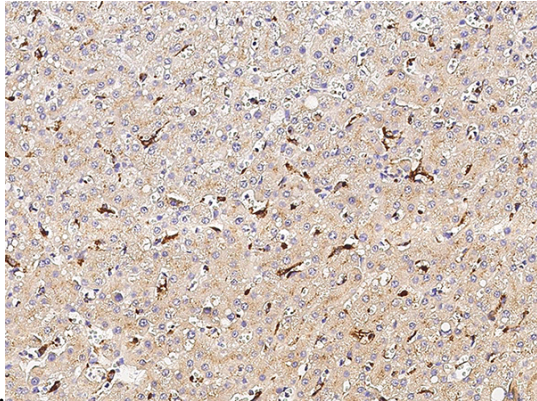
Immunochemical staining of human CPVL in human lung with rabbit polyclonal antibody (0.1

Anti-CPVL antibody



Catalog Number: 105129

μg/mL, formalin-fixed paraffin embedded

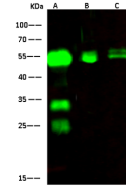


sections).

CPVL Antibody, Rabbit PAb, Antigen Affinity Purified, Immunohistochemistry

Immunochemical staining of human CPVL in

human liver with rabbit polyclonal antibody (0.1 μg/mL, formalin-fixed paraffin embedded



Items	Lanes	A	B	C
Sample (whole cell lysate)		293	HepG2	Jurkat
Sample Volume (μg/lane)		30	30	30
Gel	13%SDS-PAGE reducing gel			
Recommended Concentration	5-10 μg/ml			
Secondary Antibody	Dylight 800-labeled Antibody to Rabbit IgG (H+L), at 1:5000 dilution.			
Explanation	Developed using Odyssey imaging system. Predicted band size : 54 kDa Observed band size : 54 kDa Additional bands at : 32 kDa and 25 kDa (We are unsure as to the identity of these extra bands. They are possible non-specific bindings).			

sections).

CPVL Antibody, Rabbit PAb, Antigen Affinity Purified, Western blot