

Anti-EGR1 antibody



Catalog Number: 105109

Product name

Anti-EGR1 antibody

Specificity

Human EGR1

Antibody description

Rabbit polyclonal to EGR1

Preparation

Produced in rabbits immunized with a synthetic peptide corresponding to the center region of the Human EGR1, and purified by antigen affinity chromatography.

Formulation

0.2 μm filtered solution in PBS

Storage

This antibody can be stored at 2°C-8°C for one month without detectable loss of activity. Antibody products are stable for twelve months from date of receipt when stored at -20°C to -80°C. Preservative-Free.

Sodium azide is recommended to avoid contamination (final concentration 0.05%-0.1%). It is toxic to cells and should be disposed of properly. Avoid repeated freeze-thaw cycles.

Clonality

Polyclonal

Ig Type

Rabbit IgG

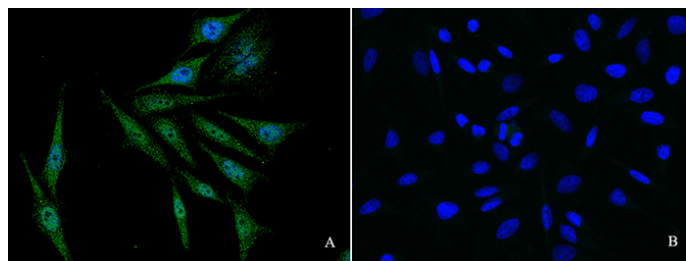
Applications

IF, ICC/IF

Dilutions

ICC/IF: 0.5-1.5 $\mu\text{g}/\text{mL}$

Validations



EGR1 Antibody, Rabbit PAb, Antigen Affinity Purified, Immunofluorescence

Immunofluorescence staining of EGR1 in HeLa cells. Cells were fixed with 4% PFA, blocked with 10% serum. Then incubated with rabbit anti-human EGR1 polyclonal antibody (1 $\mu\text{g}/\text{ml}$) (Figure A) and incubated with rabbit anti-human EGR1 polyclonal antibody and antigen (Figure B) at 4°C overnight. Then cells were stained with the Alexa Fluor®488-conjugated Goat Anti-rabbit IgG secondary antibody (green) and counterstained with DAPI (blue). Positive staining was localized to cytoplasm and nucleus.