

Anti-KRT5/Cytokeratin5 antibody



Catalog Number: 105105

Product name

Anti-KRT5/Cytokeratin5 antibody

WB: 5-10 µg/ml

ICC/IF: 0.5-1.5 µg/mL

Specificity

Human Cytokeratin 5 / KRT5

IP: 1-4 uL/mg of lysate

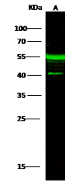
Antibody description

Rabbit polyclonal to KRT5/Cytokeratin5

Validations

Preparation

Produced in rabbits immunized with a synthetic peptide corresponding to the center region of the Human Cytokeratin 5 / KRT5, and purified by antigen affinity chromatography.



Items	Lanes	A
Sample (whole cell lysate)		MCF7
Sample Volume (µg/lane)		30
Gel		13% SDS-PAGE reducing gel
Recommended Concentration		5-10 µg/ml
Secondary Antibody		Dylight 800 labeled Antibody To Rabbit IgG (1:1), at 1:5000 dilution.
Explanation		Developed using Odyssey imaging system. Predicted band size : 62 kDa Observed band size : 55 kDa Additional bands at : 40 kDa (We are unsure as to the identity of these extra bands. They are possible non-specific bindings).

Formulation

0.2 µm filtered solution in PBS

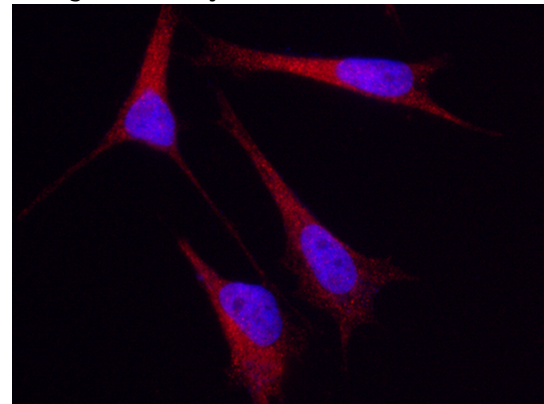
Cytokeratin 5 / KRT5 Antibody, Rabbit PAb, Antigen Affinity Purified, Western blot

Storage

This antibody can be stored at 2°C-8°C for one month without detectable loss of activity. Antibody products are stable for twelve months from date of receipt when stored at -20°C to -80°C.

Preservative-Free.

Sodium azide is recommended to avoid contamination (final concentration 0.05%-0.1%). It is toxic to cells and should be disposed of properly. Avoid repeated freeze-thaw cycles.



Cytokeratin 5 / KRT5 Antibody, Rabbit PAb, Antigen Affinity Purified, Immunofluorescence

Clonality

Polyclonal

Immunofluorescence staining of KRT5 in HeLa cells. Cells were fixed with 4% PFA, permeabilized with 0.3% Triton X-100 in PBS, blocked with 10% serum, and incubated with rabbit anti-human KRT5 polyclonal antibody (1 µg/ml) at 4°C overnight. Then cells were st

Ig Type

Rabbit IgG

Applications

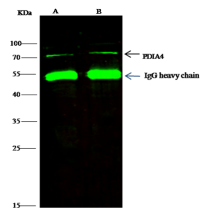
WB, IF, IP, ICC/IF

Dilutions

Anti-KRT5/Cytokeratin5 antibody



Catalog Number: 105105



Cytokeratin 5 / KRT5 Antibody, Rabbit PAb,
Antigen Affinity Purified, Immunoprecipitation

Lanes	A	B
Sample (whole cell lysate)	HeLa	MCF7
Sample quantity	0.5 mg	
IP antibody quantity	2 µg	
Immunomagnetic beads Protein G	60 µg	
Gel	13% SDS-PAGE reducing gel	
Primary antibody	PKRA4 antibody at 10 µg/ml	
Secondary antibody	DyLight 800-labeled antibody to rabbit IgG (1:1), at 1:5000 dilution	