

# Anti-ASF1A antibody



Catalog Number: 105100

## Product name

Anti-ASF1A antibody

## Specificity

Human ASF1A

## Antibody description

Rabbit polyclonal to ASF1A

## Preparation

Produced in rabbits immunized with a synthetic peptide corresponding to the C-terminus of the human ASF1A, and purified by antigen affinity chromatography.

## Formulation

0.2 µm filtered solution in PBS

## Storage

This antibody can be stored at 2°C-8°C for one month without detectable loss of activity. Antibody products are stable for twelve months from date of receipt when stored at -20°C to -80°C.

Preservative-Free.

Sodium azide is recommended to avoid contamination (final concentration 0.05%-0.1%). It is toxic to cells and should be disposed of properly. Avoid repeated freeze-thaw cycles.

## Clonality

Polyclonal

## Ig Type

Rabbit IgG

## Applications

WB, IF, IP, ICC/IF

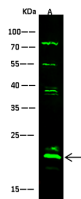
## Dilutions

WB: 5-10 µg/ml

ICC/IF: 0.1-1.0 µg/mL

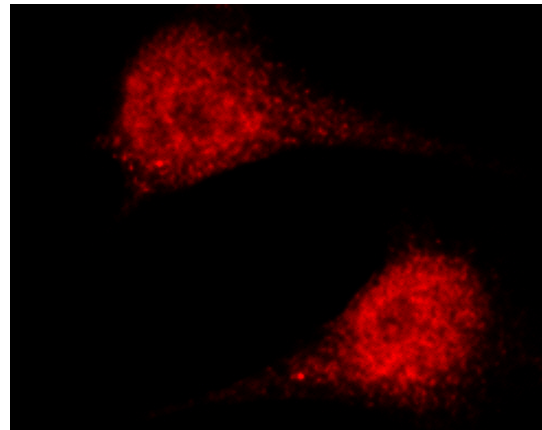
IP: 1-4 µg/mg of lysate

## Validations



Items	Lanes	A
Sample (whole-cell lysate)		Jurkat
Sample Volume (µg/lane)		30
Gel		13% SDS-PAGE reducing gel
Recommended Concentration		5-10 µg/ml
Secondary Antibody		Dylight 800-labeled Antibody To Rabbit IgG (H+L), at 1:5000 dilution.
Antibody		Developed using Odyssey imaging system.
Explanation		Predicted band size : 23 kDa Observed band size : 23 kDa Additional bands at : 73 kDa - 55kDa and 38kDa (We are unsure as to the identity of these extra bands.)

## ASF1A Antibody, Rabbit PAb, Antigen Affinity Purified, Western blot



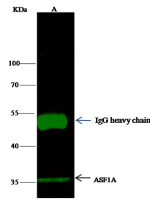
## ASF1A Antibody, Rabbit PAb, Antigen Affinity Purified, Immunofluorescence

Immunofluorescence staining of ASF1A in HeLa cells. Cells were fixed with 4% PFA, permeabilized with 0.3% Triton X-100 in PBS, blocked with 10% serum, and incubated with rabbit anti-human ASF1A polyclonal antibody (1 µg/ml) at 4°C overnight. Then cells were stained with the Alexa Fluor® 594-conjugated Goat Anti-rabbit IgG secondary antibody (red). Positive staining was

# Anti-ASF1A antibody



Catalog Number: 105100



ASF1A Antibody, Rabbit PAb, Antigen Affinity Purified, Immunoprecipitation

Lanes	A
Sample (whole cell lysate)	Hela
Sample quantity	0.5 mg
IP antibody quantity	2 µg
Protein G agarose	15 µl of 50% Protein G Agarose
Gel	13% SDS-PAGE reducing gel
Primary antibody	KLE-SMCC-sinoA840 antibody at 10 µg/ml
Secondary antibody	Dylight 800-labeled antibody to rabbit IgG (H+L), at 1:5000 dilution.

localized to nucleus.