

Anti-Sox2 antibody



Catalog Number: 105097

Product name

Anti-Sox2 antibody

Specificity

Human Sox2

Antibody description

Rabbit polyclonal to Sox2

Preparation

Produced in rabbits immunized with a synthetic peptide corresponding to the center region of the Human Sox2, and purified by antigen affinity chromatography.

Formulation

0.2 μ m filtered solution in PBS

Storage

This antibody can be stored at 2°C-8°C for one month without detectable loss of activity. Antibody products are stable for twelve months from date of receipt when stored at -20°C to -80°C.

Preservative-Free.

Sodium azide is recommended to avoid contamination (final concentration 0.05%-0.1%). It is toxic to cells and should be disposed of

properly. Avoid repeated freeze-thaw cycles.

Clonality

Polyclonal

Ig Type

Rabbit IgG

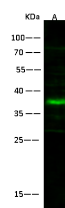
Applications

WB

Dilutions

WB: 1-2 μ g/ml

Validations



| Items | Lanes | A |
|---|-------|---|
| Sample (whole cell lysate) | | HESS9 |
| Sample Volume (μ g/lane) | | 30 |
| Gel | | 13% SDS-PAGE reducing gel |
| Recommended Concentration | | 1-2 μ g/ml |
| Secondary Antibody | | Dylight 800-labeled Antibody To Rabbit IgG (H+L), at 1:5000 dilution. |
| Developed using Odyssey imaging system. | | |
| Explanation | | Predicted band size : 34 kDa Observed band size : 37 kDa |

Sox2 Antibody, Rabbit PAb, Antigen Affinity Purified, Western blot