

Anti-CXCL5 antibody



Catalog Number: 105066

Product name

Anti-CXCL5 antibody

Immunogen

[Human CXCL5 recombinant protein](#)

Specificity

Human CXCL5

Antibody description

Rabbit polyclonal to CXCL5

Preparation

Produced in rabbits immunized with purified, recombinant Human CXCL5 (rh CXCL5; P42830; Arg45-Asn114). CXCL5 specific IgG was purified by Human CXCL5 affinity chromatography.

Formulation

0.2 µm filtered solution in PBS

Storage

This antibody can be stored at 2°C-8°C for one month without detectable loss of activity. Antibody products are stable for twelve months from date of receipt when stored at -20°C to -80°C.

Preservative-Free.

Sodium azide is recommended to avoid contamination (final concentration 0.05%-0.1%). It is toxic to cells and should be disposed of properly. Avoid repeated freeze-thaw cycles.

Clonality

Polyclonal

Ig Type

Rabbit IgG

Applications

ELISA, IHC-P

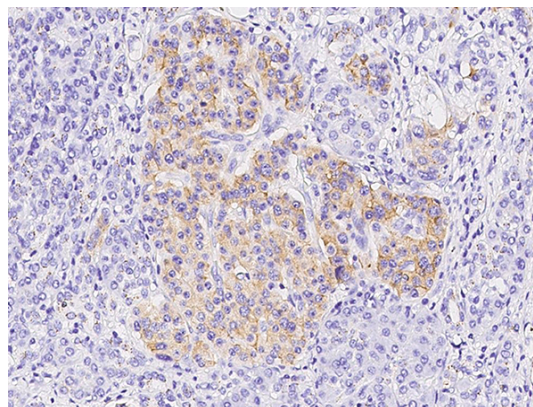
Dilutions

ELISA: 0.1-0.2 µg/ml

This antibody can be used at 0.1-0.2 µg/ml with the appropriate secondary reagents to detect Human CXCL5.

IHC-P: 0.1-2 µg/mL

Validations



CXCL5 Antibody, Rabbit PAb, Antigen Affinity Purified, Immunohistochemistry

Immunochemical staining of human CXCL5 in human pancreatic carcinoma with rabbit polyclonal antibody (1 µg/mL, formalin-fixed paraffin embedded sections).