

Anti-ATP5D antibody



Catalog Number: 105014

Product name

Anti-ATP5D antibody

Immunogen

[Human ATP5D \(His Tag\) recombinant protein](#)

Specificity

Human ATP5D

Antibody description

Rabbit polyclonal to ATP5D

Preparation

Produced in rabbits immunized with purified, recombinant Human ATP5D (rh ATP5D; P30049; Ala23-Glu168). ATP5D specific IgG was purified by Human ATP5D affinity chromatography.

Formulation

0.2 µm filtered solution in PBS

Storage

This antibody can be stored at 2°C-8°C for one month without detectable loss of activity. Antibody products are stable for twelve months from date of receipt when stored at -20°C to -80°C.

Preservative-Free.

Sodium azide is recommended to avoid contamination (final concentration 0.05%-0.1%). It is toxic to cells and should be disposed of properly. Avoid repeated freeze-thaw cycles.

Clonality

Polyclonal

Ig Type

Rabbit IgG

Applications

ELISA, WB, IHC-P, IP

Dilutions

WB: 2-10 µg/ml

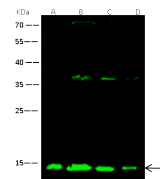
ELISA: 0.1-0.2 µg/mL

This antibody can be used at 0.1-0.2 µg/mL with the appropriate secondary reagents to detect Human ATP5D. The detection limit for Human ATP5D is < 0.039 ng/well.

IHC-P: 0.1-1 µg/mL

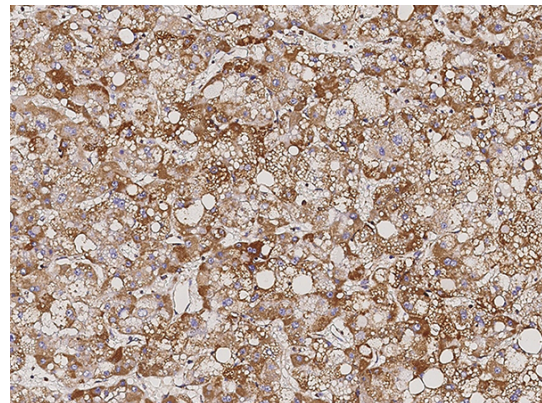
IP: 0.5-2 µg/mg of lysate

Validations



Lanes	A	B	C	D
Items	HEPG2	Raji	MOLT-4	A549
Sample (whole cell lysate)				
Sample Volume (µg/lane)	30	30	30	30
Cell	13% SDS-PAGE reducing gel			
Recommended Concentration	2-10 µg/ml			
Secondary Antibody	Dylight 800 labeled Antibody To Rabbit IgG (H+L), at 1:5000 dilution.			
Developed using Odyssey imaging system.				
Explanation	Predicted band size : 18kDa Observed band size : 14 kDa Additional bands at : 36kDa (We are unsure as to the identity of this extra band. It may be a non-specific binding).			

ATP5D Antibody, Rabbit PAb, Antigen Affinity Purified, Western blot



ATP5D Antibody, Rabbit PAb, Antigen Affinity Purified, Immunohistochemistry

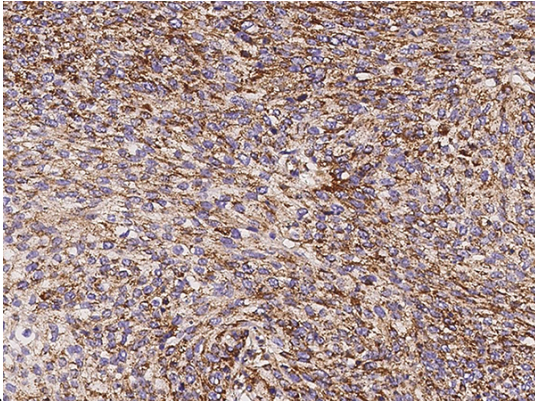
Immunochemical staining of human ATP5D in human hepatoma with rabbit polyclonal antibody

Anti-ATP5D antibody



Catalog Number: 105014

(0.2 µg/mL, formalin-fixed paraffin embedded

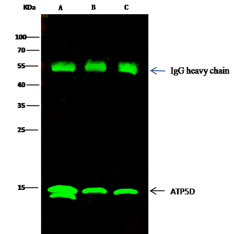


sections).

ATP5D Antibody, Rabbit PAb, Antigen Affinity Purified, Immunohistochemistry

Immunochemical staining of human ATP5D in

human lung cancer with rabbit polyclonal antibody (0.2 µg/mL, formalin-fixed paraffin



Lanes	A	B	C
Items			
Sample (whole-cell lysate)	HEPG2	Rsji	A549
Sample quantity	0.5 mg		
IP antibody quantity	2 µg		
Protein G agarose	1.5 µl of 50% Protein G Agarose		
Gel	13% SDS-PAGE reducing gel		
Primary antibody	ATP5D antibody at 2 µg/ml [Cat# 14630-RP02]		
Secondary antibody	Dylight 800-labeled antibody to rabbit IgG (H+L), at 1:5000 dilution.		

embedded sections).

ATP5D Antibody, Rabbit PAb, Antigen Affinity Purified, Immunoprecipitation