

# Anti-RBM15/OTT1 antibody



Catalog Number: 105013

## Product name

Anti-RBM15/OTT1 antibody

## Specificity

Human RBM15 / OTT1

## Antibody description

Rabbit polyclonal to RBM15/OTT1

## Preparation

Produced in rabbits immunized with a synthetic peptide corresponding to the center region of the Human RBM15 / OTT1, and purified by antigen affinity chromatography.

## Formulation

0.2 µm filtered solution in PBS

## Storage

This antibody can be stored at 2°C-8°C for one month without detectable loss of activity. Antibody products are stable for twelve months from date of receipt when stored at -20°C to -80°C.

Preservative-Free.

Sodium azide is recommended to avoid contamination (final concentration 0.05%-0.1%). It is toxic to cells and should be disposed of properly. Avoid repeated freeze-thaw cycles.

## Clonality

Polyclonal

## Ig Type

Rabbit IgG

## Applications

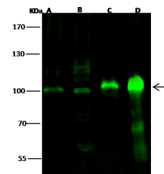
WB, IP

## Dilutions

WB: 5-10 µg/ml

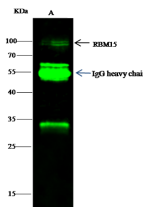
IP: 0.5-2 uL/mg of lysate

## Validations



| Lanes                     | A  | B                        | C                         | D                       |
|---------------------------|--|--------------------------|---------------------------|-------------------------|
| Items                     | HeLa (whole cell lysate)   | AA31 (whole cell lysate) | Mouse heart tissue lysate | Rat brain tissue lysate |
| Sample Volume (µg/lane)   | 30   | 30                       | 30                        | 30                      |
| Gel                       | 7.5% SDS-PAGE reducing gel   |                          |                           |                         |
| Recommended Concentration | 5-10 µg/ml   |                          |                           |                         |
| Secondary Antibody        | Dylight 800 labeled Antibody to Rabbit IgG (H+L), at 1:5000 dilution.  |                          |                           |                         |
| Explanation               | Developed using Odyssey imaging system.<br>Predicted band size: 107 kDa<br>Observed band size: 100 kDa<br>Additional bands at: 118 kDa, 70 kDa and 60 kDa (We are unsure as to the identity of these extra bands.) |                          |                           |                         |

RBM15 / OTT1 Antibody, Rabbit PAb, Antigen Affinity Purified, Western blot



| Lanes                            | A  |
|----------------------------------|--|
| Items                            | Jurkat   |
| Sample (whole cell lysate)       |  |
| Sample quantity                  | 0.5 mg   |
| IP antibody quantity             | 2 µg   |
| Immunospecific bands Protein (k) | 60 ng  |
| Gel                              | 13% SDS-PAGE reducing gel  |
| Primary antibody                 | KJ21-SMCC-SINOAI269 antibody at 10 µg/ml                             |
| Secondary antibody               | Dylight 800-labeled antibody to rabbit IgG (H+L), at 1:5000 dilution |

RBM15 / OTT1 Antibody, Rabbit PAb, Antigen Affinity Purified, Immunoprecipitation