

Anti-Serpini2 antibody



Catalog Number: 104987

Product name

Anti-Serpini2 antibody

Immunogen

[Human Serpini2 \(His Tag\) recombinant protein](#)

Specificity

Human Serpini2

Antibody description

Mouse monoclonal to Serpini2

Preparation

This antibody was produced from a hybridoma resulting from the fusion of a mouse myeloma with B cells obtained from a mouse immunized with purified, recombinant Human Serpini2 (rh Serpini2; NP_006208.1; Met1-Leu405). The IgG fraction of the cell culture supernatant was purified by Protein A affinity chromatography.

Formulation

0.2 µm filtered solution in PBS

Storage

This antibody can be stored at 2°C-8°C for one month without detectable loss of activity. Antibody products are stable for twelve months from date of receipt when stored at -20°C to -80°C.

Preservative-Free.

Sodium azide is recommended to avoid contamination (final concentration 0.05%-0.1%). It

is toxic to cells and should be disposed of properly. Avoid repeated freeze-thaw cycles.

Clonality

Monoclonal

Ig Type

Mouse IgG2a

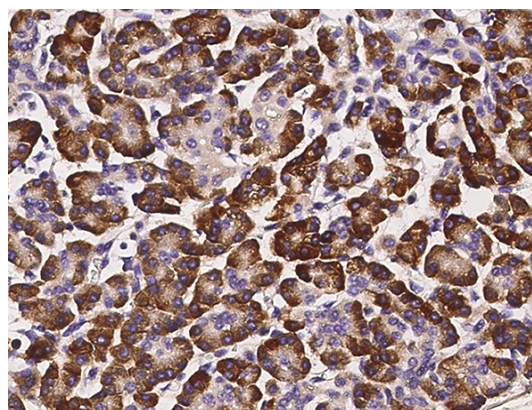
Applications

IHC-P

Dilutions

IHC-P: 0.5-3 µg/mL

Validations



Serpini2 Antibody, Mouse MAb,
Immunohistochemistry

Immunochemical staining of human SERPINI2 in human pancreas with mouse monoclonal antibody (1 µg/mL, formalin-fixed paraffin embedded sections).