

# Anti-Atlastin-3/ATL3 antibody



Catalog Number: 104933

## Product name

Anti-Atlastin-3/ATL3 antibody

## Immunogen

[Human Atlastin-3/ATL3 \(His Tag\) recombinant protein](#)

## Specificity

Human ATL3

## Antibody description

Rabbit polyclonal to Atlastin-3/ATL3

## Preparation

Produced in rabbits immunized with purified, recombinant Human ATL3 (rh ATL3; Q6DD88; Met1-Ala445). ATL3 specific IgG was purified by Human ATL3 affinity chromatography.

## Formulation

0.2 µm filtered solution in PBS

## Storage

This antibody can be stored at 2°C-8°C for one month without detectable loss of activity. Antibody products are stable for twelve months from date of receipt when stored at -20°C to -80°C.

Preservative-Free.

Sodium azide is recommended to avoid contamination (final concentration 0.05%-0.1%). It is toxic to cells and should be disposed of properly. Avoid repeated freeze-thaw cycles.

## Clonality

Polyclonal

## Ig Type

Rabbit IgG

## Applications

ELISA, WB, IP

## Dilutions

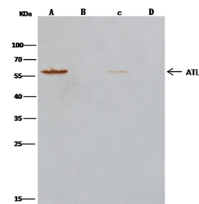
WB: 5-10 µg/mL

ELISA: 0.1-0.2 µg/mL

This antibody can be used at 0.1-0.2 µg/mL with the appropriate secondary reagents to detect Human ATL3. The detection limit for Human ATL3 is < 0.039 ng/well.

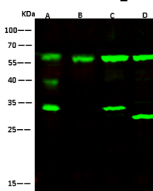
IP: 1-4 µg/mg of lysate

## Validations



Lanes	A	B	C	D
Sample (whole cell lysate)	Jurkat		NIH-3T3	
Sample quantity	0.5 mg			
IP antibody type	His-1K-ATL3-RFP2	Rabbit blank IgG	His-1K-ATL3-RFP2	Rabbit blank IgG
IP antibody quantity	2 µg			
Protein G agarose	15 µl of 50 % Protein G Agarose			
Gel	13 % SDS-PAGE reducing gel			
Primary antibody	His-1K-ATL3 antibody at 10 µg/ml			
Secondary antibody	Clon-8800 IP Detection Reagent (DIP) at 1:1000 dilution			

ATL3 Antibody, Rabbit PAb, Antigen Affinity Purified, Immunoprecipitation



Lanes	A	B	C	D
Sample	Mouse liver (tissue lysate)	293T (whole cell lysate)	NIH-3T3 (whole cell lysate)	Jurkat (whole cell lysate)
Sample Volume (µg/lane)	30	30	30	30
Gel	13% SDS-PAGE reducing gel			
Recommended Concentration	5-10 µg/ml			
Secondary Antibody	Dylight 800-labeled Antibody To Rabbit IgG (H+L), at 1:5000 dilution.			
	Developed using Odyssey imaging system.			
Explanation	Predicted band size : 61 kDa Observed band size : 61 kDa Additional bands at : 39 kDa, 33 kDa and 28 kDa (We are unsure as to the identity of these extra bands. They are possible non-specific bindings).			

ATL3 Antibody, Rabbit PAb, Antigen Affinity Purified, Western blot