

# Anti-CXCL1 antibody



Catalog Number: 104925

## Product name

Anti-CXCL1 antibody

## Specificity

Human CXCL1

## Antibody description

Rabbit polyclonal to CXCL1

## Preparation

Produced in rabbits immunized with a synthetic peptide corresponding to the center region of the Human CXCL1, and purified by antigen affinity chromatography.

## Formulation

0.2 µm filtered solution in PBS

## Storage

This antibody can be stored at 2°C-8°C for one month without detectable loss of activity. Antibody products are stable for twelve months from date of receipt when stored at -20°C to -80°C.

Preservative-Free.

Sodium azide is recommended to avoid contamination (final concentration 0.05%-0.1%). It is toxic to cells and should be disposed of properly. Avoid repeated freeze-thaw cycles.

## Clonality

Polyclonal

## Ig Type

Rabbit IgG

## Applications

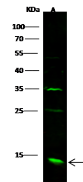
WB, IP

## Dilutions

WB: 10-20 µg/ml

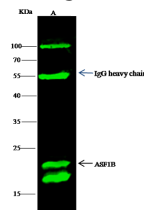
IP: 0.5-2 uL/mg of lysate

## Validations



Items	Lanes	A
Sample (whole cell lysate)		Jurkat
Sample Volume (µg/lane)		30
Gel		13% SDS-PAGE reducing gel
Recommended Concentration		10-20 µg/ml
Secondary Antibody		Dylight 800 labeled Antibody to Rabbit IgG (H+L), at 1:5000 dilution.
Explanation		Developed using Odyssey imaging system. Predicted band size: 31 kDa Observed band size: 33 kDa Additional bands at: 35 kDa and 25 kDa (We are unsure as to the identity of these extra bands. They are possible non-specific bindings).

## CXCL1 Antibody, Rabbit PAb, Antigen Affinity



Items	Lanes	A
Sample (whole cell lysate)		K562
Sample quantity		0.5 mg
IP antibody quantity		2 µg
Immuno magnetic beads Protein G		60 µg
Gel		13% SDS-PAGE reducing gel
Primary antibody		ASP1B antibody at 10 µg/ml
Secondary antibody		Dylight 800-labeled antibody to rabbit IgG (H+L), at 1:5000 dilution

Purified, Western blot

## CXCL1 Antibody, Rabbit PAb, Antigen Affinity

Purified, Immunoprecipitation