

Anti-RAB7A / Rab-7a antibody



Catalog Number: 104920

Product name

Anti-RAB7A / Rab-7a antibody

Immunogen

[Rat RAB7A / Rab-7a \(His Tag\) recombinant protein](#)

Specificity

Rat RAB7A / Rab-7a

Antibody description

Rabbit polyclonal to RAB7A / Rab-7a

Preparation

Produced in rabbits immunized with purified, recombinant Rat RAB7A / Rab-7a (rR RAB7A / Rab-7a; NP_076440.1; Met1-Cys207). RAB7A / Rab-7a specific IgG was purified by Rat RAB7A / Rab-7a affinity chromatography.

Formulation

0.2 µm filtered solution in PBS

Storage

This antibody can be stored at 2°C-8°C for one month without detectable loss of activity. Antibody products are stable for twelve months from date of receipt when stored at -20°C to -80°C.

Preservative-Free.

Sodium azide is recommended to avoid contamination (final concentration 0.05%-0.1%). It is toxic to cells and should be disposed of properly. Avoid repeated freeze-thaw cycles.

Clonality

Polyclonal

Ig Type

Rabbit IgG

Applications

ELISA, WB, IHC-P, IP

Dilutions

WB: 0.5-5 µg/ml

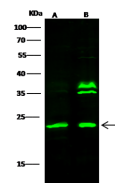
ELISA: 0.1-0.2 µg/ml

This antibody can be used at 0.1-0.2 µg/ml with the appropriate secondary reagents to detect Rat RAB7A / Rab-7a.

IHC-P: 0.5-5 µg/mL

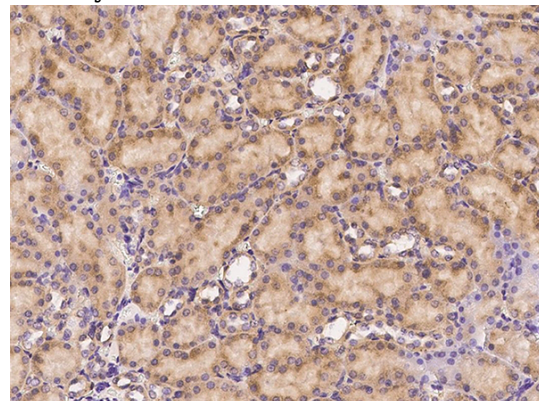
IP: 1-4 µg/mg of lysate

Validations



Lanes	A	B
Items		
Sample (whole cell lysate)	A431	K562
Sample Volume (µg/lane)	30	30
Gel	13% SDS-PAGE reducing gel	
Recommended Concentration	0.5-5 µg/ml	
Secondary Antibody	Dylight 800-labeled Antibody to Rabbit IgG (H+L), at 1:5000 dilution.	
Explanation	Developed using Odyssey imaging system. Predicted band size : 23 kDa Observed band size : 23 kDa Additional bands at : 37 kDa and 35 kDa (We are unsure as to the identity of these extra bands.)	

RAB7A / Rab-7a Antibody, Rabbit PAb, Antigen Affinity Purified, Western blot



RAB7A / Rab-7a Antibody, Rabbit PAb, Antigen Affinity Purified, Immunohistochemistry

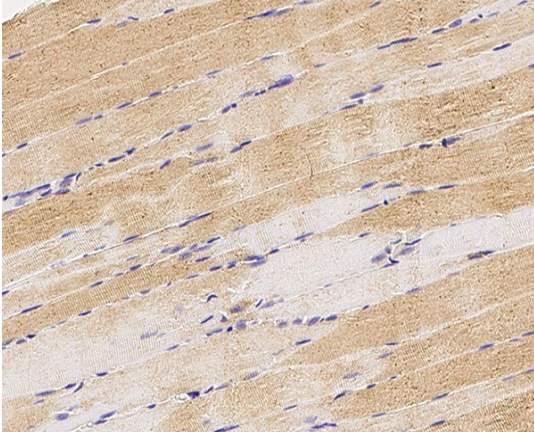
Immunochemical staining of rat Rab7a in rat

Anti-RAB7A / Rab-7a antibody



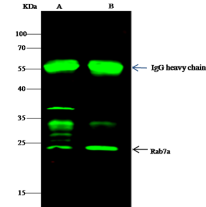
Catalog Number: 104920

kidney with rabbit polyclonal antibody (1 µg/mL, formalin-fixed paraffin embedded sections).



RAB7A / Rab-7a Antibody, Rabbit PAb, Antigen Affinity Purified, Immunohistochemistry

Immunochemical staining of rat Rab7a in rat skeletal muscle with rabbit polyclonal antibody (2 µg/mL, formalin-fixed paraffin embedded



Items	Lanes	A	B
Sample (whole cell lysate)		A431	K562
Sample quantity		0.5 mg	
IP antibody quantity		2 µg	
Immunomagnetic beads (Protein G)		60 µg	
Cell		13% SDS-PAGE reducing gel	
Primary antibody		His-43K-eelRab7a antibody at 10 µg/ml	
Secondary antibody		Dylight 800-labeled antibody to rabbit IgG (1:1), at 1:5000 dilution	

sections).

RAB7A / Rab-7a Antibody, Rabbit PAb, Antigen Affinity Purified, Immunoprecipitation