

Anti-JMJD6/PSR antibody



Catalog Number: 104904

Product name

Anti-JMJD6/PSR antibody

Specificity

Human JMJD6

Antibody description

Rabbit polyclonal to JMJD6/PSR

Preparation

Produced in rabbits immunized with a synthetic peptide corresponding to the center region of the Human JMJD6, and purified by antigen affinity chromatography.

Formulation

0.2 µm filtered solution in PBS

Storage

This antibody can be stored at 2°C-8°C for one month without detectable loss of activity. Antibody products are stable for twelve months from date of receipt when stored at -20°C to -80°C.

Preservative-Free.

Sodium azide is recommended to avoid contamination (final concentration 0.05%-0.1%). It is toxic to cells and should be disposed of properly. Avoid repeated freeze-thaw cycles.

Clonality

Polyclonal

Ig Type

Rabbit IgG

Applications

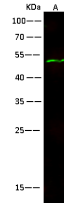
WB, IF, ICC/IF

Dilutions

WB: 10-20 µg/ml

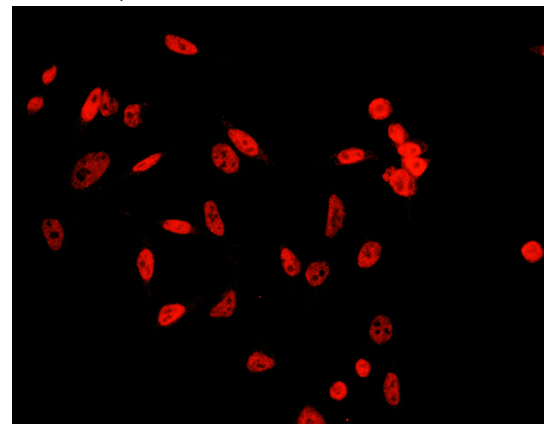
ICC/IF: 0.5-1.5 µg/mL

Validations



Items	Lanes	A
Sample (whole cell lysate)		NH3T3
Sample Volume (µg/lane)		30
Gel		13%SDS-PAGE reducing gel
Recommended Concentration		10-20 µg/ml
Secondary Antibody		Dylight 800 labeled Antibody To Rabbit IgG (H+L), at 1:5000 dilution.
Developed		using Odyssey imaging system.
Explanation		Predicted band size : 46 kDa Observed band size : 50 kDa

JMJD6 Antibody, Rabbit PAb, Antigen Affinity Purified, Western blot



JMJD6 Antibody, Rabbit PAb, Antigen Affinity Purified, Immunofluorescence

Immunofluorescence staining of JMJD6 in HeLa cells. Cells were fixed with 4% PFA, blocked with 10% serum, and incubated with rabbit anti-human JMJD6 polyclonal antibody (1 µg/ml) at 4°C overnight. Then cells were stained with the Alexa Fluor® 594-conjugated Goat Anti-rabbit IgG secondary antibody (red). Positive staining was localized to nucleus..