

Anti-HK1/Hexokinase 1 antibody



Catalog Number: 104902

Product name

Anti-HK1/Hexokinase 1 antibody

WB: 10-20 µg/ml

Specificity

Human HK1

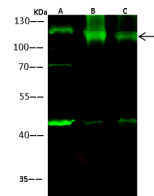
ICC/IF: 0.5-1.5µg/mL

IP: 1-4 uL/mg of lysate

Antibody description

Rabbit polyclonal to HK1/Hexokinase 1

Validations



Items	Lanes	A	B	C
Sample (whole cell lysate)		Jurkat	HeLa	A431
Sample Volume (µg/lane)		30	30	30
Gel	13% SDS-PAGE reducing gel			
Recommended Concentration	10-20 µg/ml			
Secondary Antibody	Dylight 800-labeled Antibody To Rabbit IgG (H+L), at 1:5000 dilution.			
Developed using Odyssey imaging system.				
Explanation	Predicted band size : 102 kDa Observed band size : 113 kDa Additional bands at : 70 kDa and 45 kDa (We are unsure as to the identity of these extra bands.)			

Preparation

Produced in rabbits immunized with a synthetic peptide corresponding to the center region of the Human HK1, and purified by antigen affinity chromatography.

Formulation

0.2 µm filtered solution in PBS

Storage

This antibody can be stored at 2°C-8°C for one month without detectable loss of activity. Antibody products are stable for twelve months from date of receipt when stored at -20°C to -80°C.

Preservative-Free.

Sodium azide is recommended to avoid contamination (final concentration 0.05%-0.1%). It is toxic to cells and should be disposed of properly. Avoid repeated freeze-thaw cycles.

Clonality

Polyclonal

Ig Type

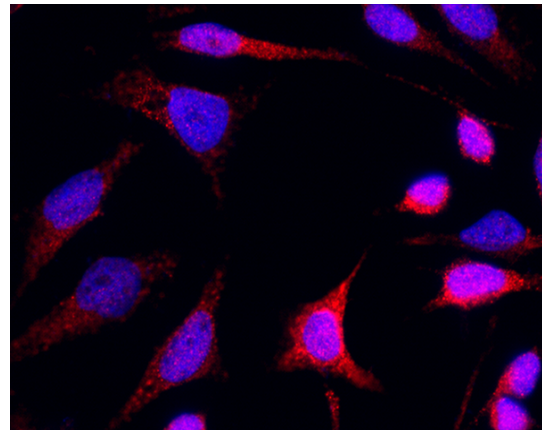
Rabbit IgG

Applications

WB, IF, IP, ICC/IF

Dilutions

HK1 Antibody, Rabbit PAb, Antigen Affinity Purified, Western blot



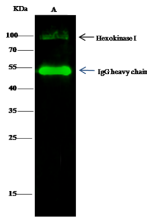
HK1 Antibody, Rabbit PAb, Antigen Affinity Purified, Immunofluorescence

Immunofluorescence staining of HK1 in HeLa cells. Cells were fixed with 4% PFA, blocked with 10% serum, and incubated with rabbit anti-human HK1 polyclonal antibody (1 µg/ml) at 4°C overnight. Then cells were stained with the Alexa Fluor®594-conjugated Goat Anti-rabbit IgG secondary antibody (red) and counterstained with DAPI (blue). Positive staining was localized to

Anti-HK1/Hexokinase 1 antibody



Catalog Number: 104902



HK1 Antibody, Rabbit PAb, Antigen Affinity Purified, Immunoprecipitation

cytoplasm.

Lane	A
Sample (whole cell lysate)	HEpLA
Sample quantity	0.5 mg
IP antibody quantity	2 µg
Protein G agarose	60 µg Immomagnetic beads ProteinG
Gel	15% SDS-PAGE reducing gel
Primary antibody	HK1Ag-2-SMCC-sinoA1347 antibody at 10 µg/ml
Secondary antibody	Dylight 800-labeled antibody to rabbit IgG (H+L), at 1:5000 dilution