

Anti-PS6K / RPS6KB1 antibody



Catalog Number: 104897

Product name

Anti-PS6K / RPS6KB1 antibody

Immunogen

[Human PS6K / RPS6KB1 \(GST Tag\) recombinant protein](#)

Specificity

Human PS6K / RPS6KB1

Antibody description

Rabbit polyclonal to PS6K / RPS6KB1

Preparation

Produced in rabbits immunized with purified, recombinant Human PS6K / RPS6KB1 (rh PS6K / RPS6KB1; P23443; Met1-Leu525). PS6K / RPS6KB1 specific IgG was purified by Human PS6K / RPS6KB1 affinity chromatography.

Formulation

0.2 µm filtered solution in PBS

Storage

This antibody can be stored at 2°C-8°C for one month without detectable loss of activity. Antibody products are stable for twelve months from date of receipt when stored at -20°C to -80°C.

Preservative-Free.

Sodium azide is recommended to avoid contamination (final concentration 0.05%-0.1%). It is toxic to cells and should be disposed of properly. Avoid repeated freeze-thaw cycles.

Clonality

Polyclonal

Ig Type

Rabbit IgG

Applications

WB, IF, IP

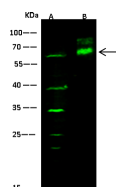
Dilutions

WB: 5-10 µg/mL

ICC/IF: 0.5-1.5 µg/mL

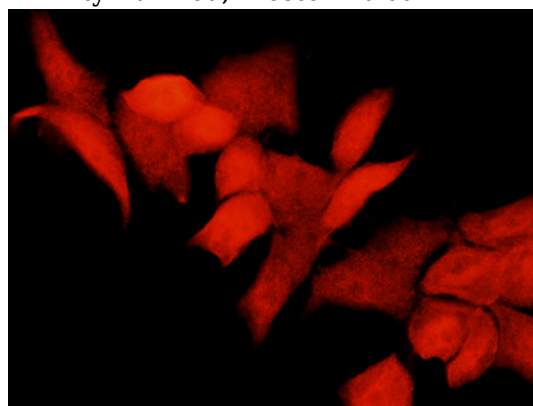
IP: 1-4 uL/mg of lysate

Validations



Lanes	A	B
Sample (whole cell lysate)	Hela	MCF7
Sample Volume (µg/lane)	30	30
Gel	13% SDS-PAGE reducing gel	
Recommended Concentration	5-10 µg/ml	
Secondary Antibody	Dylight 800-labeled Antibody To Rabbit IgG (H+L), at 1:5000 dilution.	
Explanation	Developed using Odyssey imaging system. Predicted band size: 59 kDa Observed band size: 59 kDa Additional bands at: 38 kDa, 33 kDa, 25 kDa and 22 kDa (We are unsure as to the identity of these extra bands.)	

PS6K / RPS6KB1 Antibody, Rabbit PAb, Antigen Affinity Purified, Western blot



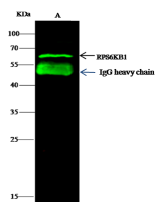
PS6K / RPS6KB1 Antibody, Rabbit PAb, Antigen Affinity Purified, Immunofluorescence

Immunofluorescence staining of RPS6KB1 in MCF7 cells. Cells were fixed with 4% PFA, permeabilized with 0.3% Triton X-100 in PBS, blocked with 10% serum, and incubated with rabbit anti-human RPS6KB1 polyclonal antibody (1 µg/mL) at 4°C overnight. Then cells w

Anti-PS6K / RPS6KB1 antibody



Catalog Number: 104897



PS6K / RPS6KB1 Antibody, Rabbit PAb, Antigen Affinity Purified, Immunoprecipitation

Item	A
Sample (whole-cell lysate)	HeLa
Sample quantity	0.5 mg
IP antibody quantity	2 µg
Protein G agarose	15 µl of 50% Protein G Agarose
Gel	13% SDS-PAGE reducing gel
Primary antibody	GST-RPS6KB1 antibody at 10 µg/ml
Secondary antibody	Dylight 800-labeled antibody to rabbit IgG (H+L), at 1:5000 dilution