

Anti-SMARCC1 antibody



Catalog Number: 104894

Product name

Anti-SMARCC1 antibody

Specificity

Human SMARCC1

Antibody description

Rabbit polyclonal to SMARCC1

Preparation

Produced in rabbits immunized with a synthetic peptide corresponding to the center region of the Human SMARCC1, and purified by antigen affinity chromatography.

Formulation

0.2 µm filtered solution in PBS

Storage

This antibody can be stored at 2°C-8°C for one month without detectable loss of activity. Antibody products are stable for twelve months from date of receipt when stored at -20°C to -80°C.

Preservative-Free.

Sodium azide is recommended to avoid contamination (final concentration 0.05%-0.1%). It is toxic to cells and should be disposed of properly. Avoid repeated freeze-thaw cycles.

Clonality

Polyclonal

Ig Type

Rabbit IgG

Applications

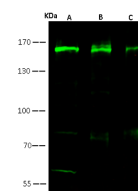
WB, IP

Dilutions

WB: 5-10 µg/ml

IP: 1-4 uL/mg of lysate

Validations



Lanes	A	B	C
Items			
Sample (whole cell lysate)	Jurkat	Hela	293T
Sample Volume (µg/lane)	30	30	30
Gel	7.5% SDS-PAGE reducing gel		
Recommended Concentration	5-10 µg/ml		
Secondary Antibody	Dylight 800 labeled Antibody To Rabbit IgG (H+L), at 1:5000 dilution.		
	Developed using Odyssey imaging system.		
Explanation	Predicted band size : 123 kDa Observed band size : 160 kDa Additional bands at : 85 kDa and 60 kDa (We are unsure as to the identity of these extra bands.)		

SMARCC1 Antibody, Rabbit PAb, Antigen Affinity Purified, Western blot