

## Product name

Anti-p63 / TP63 antibody

## Specificity

Human p63(alpha)

## Antibody description

Rabbit monoclonal to p63 / TP63

## Preparation

This antibody was obtained from a rabbit immunized with A synthetic peptide corresponding to the C-terminus of the human p63(alpha p63).

## Formulation

0.2 µm filtered solution in PBS

## Storage

This antibody can be stored at 2°C-8°C for one month without detectable loss of activity. Antibody products are stable for twelve months from date of receipt when stored at -20°C to -80°C. Preservative-Free. Sodium azide is recommended to avoid contamination (final concentration 0.05%-0.1%). It is toxic to cells and should be disposed of properly. Avoid repeated freeze-thaw cycles.

## Clonality

Monoclonal

## Ig Type

Rabbit IgG

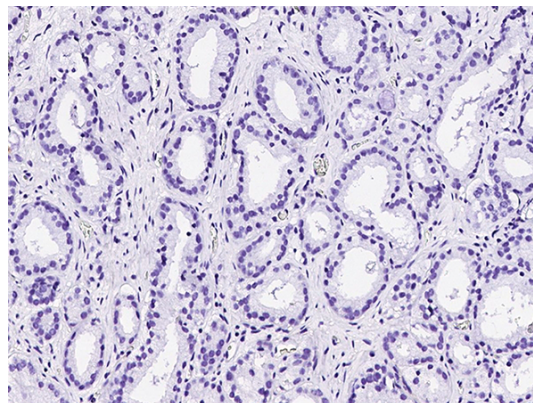
## Applications

IHC-P

## Dilutions

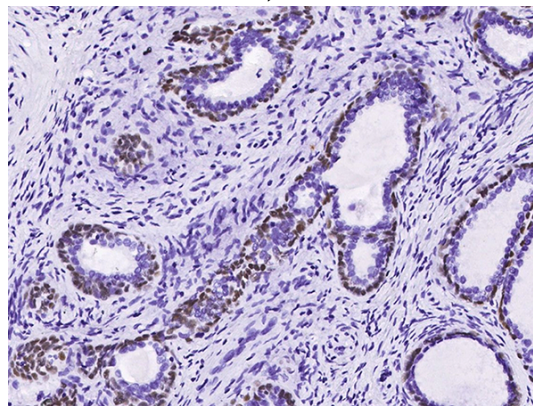
IHC-P: 1-10 µg/mL

## Validations



p63(alpha) Antibody, Rabbit MAb, Immunohistochemistry

Immunochemical staining of human P63 in human prostatic carcinoma with rabbit monoclonal antibody (5 µg/mL, formalin-fixed paraffin embedded sections).



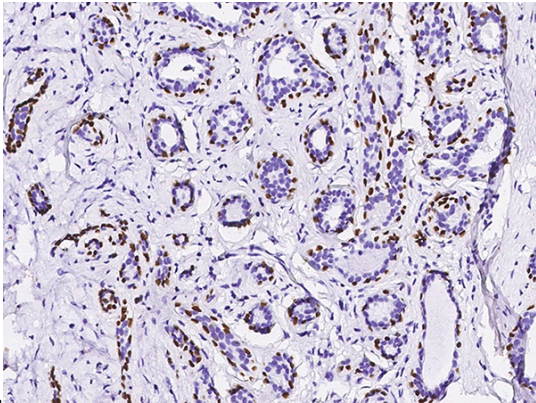
p63(alpha) Antibody, Rabbit MAb, Immunohistochemistry

Immunochemical staining of human P63 in human prostate with rabbit monoclonal antibody (5 µg/mL, formalin-fixed paraffin embedded)

# Anti-p63 / TP63 antibody

Catalog Number: 104888

---



p63(alpha) Antibody, Rabbit MAb,  
Immunohistochemistry

Immunochemical staining of human P63 in human breast carcinoma with rabbit monoclonal antibody (5 µg/mL, formalin-fixed paraffin embedded sections).

sections).